



www.emmanuelepiscopal.org

# Angelus

314-961-2393

Vol. 49, No 04–October 14, 2014

**In This Issue**

	Page
Rector’s Message	1
Adult Forum	2
All Saints Day Necrology	3
About the Parish Family	3
Veteran’s Day Service	3
WOE Speaker Series	4
Lydia’s House Ingathering	4
Blood Drive	4
Bold In Mission	5
Emmanuel Book Club	6
Fall Clean-up Day	7
Jr. High News	7
Little White Churches	8
Alliance for Interracial Dignity	8
Baptismal Dates	10
Birthdays/Anniversaries/Acolytes	11
Prayers of the Parish	12
Parish Calendar	13
Sunday Propers	14



**Clergy & Staff listing 10**

**In the case of a pastoral emergency after office hours, please call the clergy cell phone at 314-324-4115.**

**Rector’s Message**

Dear Friends,

I came across a quote the other day. I am not sure where I got it from, but it goes like this:

“In the world seen through God's eyes, water not only cleanses and refreshes, water also transforms. In the world seen through God's eyes, a morsel of bread and a sip of wine offer life-altering nourishment. In the world seen through God's eyes, everyone around us becomes our sisters and brothers, created in God's image and one in the spirit. And most surprisingly - In the world seen through God's eyes, one gains life by losing it.”

I was struck by this quote as we entered this Season of Stewardship, with its focus on being **Bold in Mission**. After all, I think that at Emmanuel, our commitment to mission is bound together in this understanding that we are made in the image of God, and that God made the whole human race to live in harmony on earth, as brothers and sisters. And, if we are all children of God, then we are companions on this “fragile earth, our island home” – partners in serving the world in Christ’s name.

On page 5 and 6 of this edition of the Angelus, you can read some reflections of Emmanuelites, and how their mission journeys deeply touched them. As I read them, I again, recognized that in mission, we seek to make “incarnate” – to make flesh – this vision that we are partners with the human family, as we work for a commonwealth of peace and reconciliation. In our mission journeys, we encounter diverse and differing people. In mission, we are called to intently listen to and fully come to know them. As we do so, we are bound to discover new and better ways to be companions with them and to create the space for deep encounters with God and each other. When such partnerships in mission occur, we can come to the realization that as we are reaching out to others, they are reaching out to us. And in that moment, I believe that God comes very near to us – and together, we can become the hands, heart and feet of Jesus in the world.

This fall, throughout our financial campaign, we are being asked to reflect on the questions: *What does ‘Mission’ mean? How does Emmanuel live out its mission? What is God’s Mission for me? And, when have I acted as the ‘Hands and Feet’ of Christ?* It is my hope that as we reflect on these questions everyone will understand that it is through our financial support of our parish’s budget that we encourage our ministry of mission in the world. It is through our gener-

Continued on pg. 2

Continued from pg. 1


ous financial pledges towards our 2015 Budget that we can undergird this ministry in the coming year.

I once shared with you the image of southern women at a family/community meal to describe Christian hospitality. It applies to what our approach to mission can be, as well. As hosts in a southern home and kitchen, we don't sit or rest, we hover - attentive to the needs of those we encounter. Plates are never empty, and we continually ask if something more or different is needed. The work is never done! The mission is never complete! And, like good southern cooks and hosts we continue to serve everyone throughout the feast. And, as in such a wonderful meal, in the midst of all, we engage in deep conversation with each other, sharing our stories, and laughing and weeping as our lives are brought ever closer. This is perhaps the most divine gift of all that we are to cherish - being drawn into closer relationship with each other which is marked by God's love and reconciliation.

This image of a community meal strikes a chord in me, as I reflect on the transforming relationships that we experience when we encounter others in mission as companions in God's kingdom making. And, as we approach the time to turn in pledge cards to support the Mission of Emmanuel Church, I ask you to strongly support the mission feast that is taking place.

Be ever more **Bold in Mission!** Be generous in your financial support of Emmanuel. Be drawn ever closer to God and neighbor. For in such places, the kingdom of God comes very near to us.

Peace,



Daniel

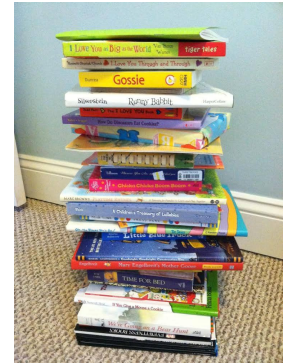
### Dear Emmanuel Family:

I would like to offer a most heartfelt thanks to all of the

Women of Emmanuel who helped to stock Baby Slane's library this past Friday at our wonderful W.O.E. gathering. Chris and I are extremely grateful for your generosity and thoughtfulness, and have already started to read your books to baby. We were amazed that of the numerous books we received, there were no repeats. It just goes to show what a diverse group of well-read women we have in this parish. We feel so blessed to be a part of this community knowing that our son will be loved by so many faithful people.

With Thanks,

Rev. Melanie Slane

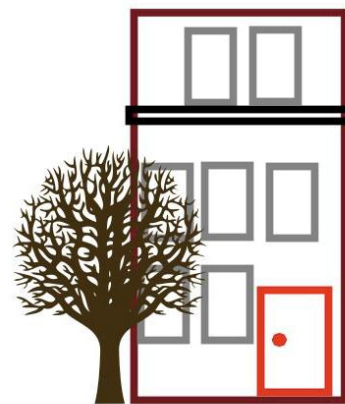


## Adult Forum October 19

Emmanuel welcomes **Deaconess Anne House** to our house.

**Tori Dahl**, our new Deaconess Anne House Intern, **Jon Stratton**, Director of DAH, and Emmanuelites involved in supporting their ministry will present a panel discussion on the ministry of Deaconess Anne House, and how Emmanuel is supporting their work.

Come and learn how dedicated young people are sharing the love of Christ in Old North St. Louis as they are growing in faith and discipleship.



## Deaconess Anne House

Episcopal Service Corps - St. Louis Branch

**ALL SAINTS DAY NECROLOGY  
DUE BY OCTOBER 29**

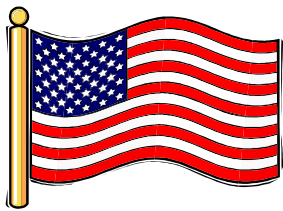
If you would like to have the name of a loved one included in the **All Saints Day necrology** on Sunday, **November 2**, please contact either Team Susie or Susan Baseley before 5:00 p.m. on **Wednesday, October 29**.

Please provide the person’s Christian name rather than Mrs. J Doe. And let the office know which service you will attend on November 3.

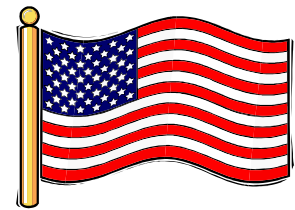
**About the Parish Family**

Gifts to the Emmanuel Church Foundation:  
In Honor of Paul LaFata’s Birthday.

Gifts to the Emmanuel Food Center in Memory  
of Candy Druschky.



**Veterans Day Service  
Sunday, November 9, 5:30 p.m.  
Save the Date!**



You will want to mark your calendar to attend this special service. Veterans Day will be observed at Emmanuel on Sunday, **November 9**, with special worship at the **5:30 p.m.** service.

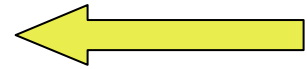
We will honor both those who have served and those who are currently serving in the armed forces defending our country.

During the service, we will pray by name for veterans, for those who are current members of the armed forces and those who have died in service.

Please use the form below or notify the parish office of those you wish to include by name in the prayers. You can also email the information to [parishadmin@emmanuelepiscopal.org](mailto:parishadmin@emmanuelepiscopal.org).

Name	Check as appropriate:	Veteran	Currently Serving	In Combat	Died in Service
_____		___	___	___	___
_____		___	___	___	___
_____		___	___	___	___

## WOE Speaker Series – **October 28th**



On Tuesday evening, **October 28**, The Very Rev. Mike Kinman, Dean of Christ Church Cathedral will be our featured speaker for the Women of Emmanuel dinner. Social hour will begin at **6:00 P.M.**, dinner will be served at **6:30** and the talk will begin at **7:00**. Please watch for sign-up sheets after Adult Ed or email your reservation to [Mart-mitchell1@gmail.com](mailto:Mart-mitchell1@gmail.com). There will be small charge for dinner collected that evening. We are hoping for a large turn-out and for food planning purposes please let us know if you are coming.

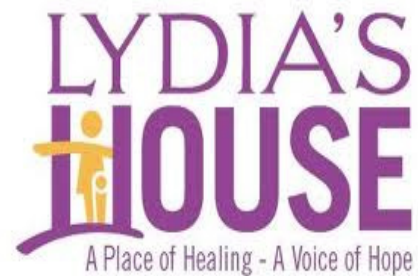
As women and children causes are very important to the heart of the Women of Emmanuel, Mike will be speaking to us about Magdalene St. Louis. Magdalene is a St. Louis based nonprofit start-up that offers women who have survived lives of abuse, prostitution, and addiction a safe place: two years of housing, support, and education at no cost. They invite women coming out of correctional facilities or off the streets into a compassionate and disciplined community where they can recover and rebuild their lives. We are honored to have Mike Kinman with us.

## Lydia's House In-gathering through October

Lydia's House, a shelter for women and their children who have experienced domestic violence, offers "a place of healing, a voice of hope" for those who live there and learn new skills as well as undergo job training and education for approximately two years.

Emmanuel has been helping to support the residents of Lydia's House for the past few years in several ways. Emmanuel provides the meal for a weekly community dinner at least three times a year. Also, Emmanuel collects products in October during Domestic Violence Awareness Month. This year we are collecting the following products: paper towels, paper napkins, toilet paper,

disposable diapers of all sizes, feminine products, body wash, liquid laundry detergent, and dish-washing detergent.



Collection boxes for donations will be in the dining room from October 2 until November 2. Please give generously to help these women and children in their new lives of hope. If you have questions, please call **Laura McCord** at 738-9139.

## Blood Drive

### The Caring Ministries Blood Drive

The drive will be held in the dining room on **Saturday, Oct. 25, 2014, between 8:00a.m. and 12 noon**. Our goal for the drive is 35 units of blood: every donor has the potential of helping up to 4 people, due to blood being split up into its different components. Please help us reach our goal. Child care will be provided. High school students may be able to earn Community Service Hours for school or the Mission Trip by either giving blood or working as a volunteer—check with your school. This year, 16

year olds will be accepted with a signed parental permission form. To ask questions, or for last-minute sign-ups, call Katherine Ziegler at 961-3327, Pat Wiltse at 542-3655, or Peg Cooper at 821-1012.

**Sign up on Sundays during Adult Forum, at the Wednesday night community suppers, or on the bulletin board outside the Food Center;** invite your friends to donate as well. **WALK-IN DONORS WILL ALSO BE WELCOME .**

**The Mississippi Valley blood center has a contract with the U.S. Defense Dept. to supply blood to our troops in the U.S.A. and overseas, so your blood donations will help to support our men and women in the service.**

## We are Bold in Mission—by Donna Erickson

With the focus of the Stewardship ‘season’ being ‘Bold in Mission’ and Emmanuel’s legacy of outreach, I couldn’t help but be curious about the lasting effects, if any, that Mission trips have had on the teens our parish has helped nurture and send out into the world.

They are now adults, living in different parts of the world, with families and/or careers of their own and former Senior High leaders/ministers have been called to other parishes. But, all I suspect, remain in our collective memory and heart.

I wasn’t content to be merely curious. I reached out via social media and asked for their thoughts about Emmanuel and the Mission trips they experienced - and the responses are starting to come in!

We’ll be sharing them as they do...

*“Of course there are so many wonderful and lasting memories from Mission Trips it is hard to focus in on just one. So many include moments of just pure joy and fun; I don’t think any of us can conjure the image of a full passenger van singing along to “Jolene” at the top of their lungs or jumping into a four square tournament anywhere and everywhere (including a McDonald’s parking lot and Lakota Sioux reservation) without it bringing a smile to our face.*

*“I’ve talked to my sisters about this before and I honestly think our Mission Trip experiences played an influential role in the career paths we took. Those trips taught us early on how much value you can bring to your life by using what you have to help others.*

*“If there was one person or experience I would say exemplified how amazing Mission Trips were it would be the woman from West Virginia I met while walking one morning with some youth group leaders. She joined us on our walk and then came out to meet us every morning for the rest of the week. She offered insight about her life and her community and expressed her gratitude for our presence with her presence on those walks. I really enjoyed that time spent with her and was sad to say good bye to her-but I heard from her later that month when she sent me a birthday card! Having the relationship continue and extend beyond the one week we were in Appalachia made me*

*realize the lasting and powerful impact you can have on someone else’s life and I’ve never forgotten that!”*

**By Molly (Thacker) Nicol**

*“There has never been a moment during mission work when I wasn’t aware of God broadening my perspective of people and culture. Every relationship, every challenge, every joy, every concern, every problem-solving effort, every meal prepared and shared included a new way of viewing life together. The person immersed in a new setting finds self-examination quite natural, even as he or she is attempting to make sense of the realities around them.*

*“If we consider that genuine stewardship is every response we offer after we say, “We believe”, then each mission moment is an opportunity offered by God, to bless as we have been blessed. No doubt, God is honored by virtue of our response.*

*“I treasure all those moments and laugh out loud sometimes when I remember how hard work was transformed into play, thanks to the incredible team around me.”*

**By Jim Friedel**

*“What I have come to think of as my Emmanuel time is now two decades ago. I am very proud, however, that those wondrous journeys, designed to engage our youth and adult leaders with different peoples and different cultures, live on.*

*“The memories come thick as gnats if I stop to recall. I’ll give you these...”*

*“Compline from the New Zealand Prayer Book followed by “talking circle” in a lodge in Talequa, Oklahoma. Making and breaking the circle after a long day in the Oklahoma sun, helping build a ballfield, a different kind of “Field of Dreams”, for Cherokee youth. Being given gifts and thanks on the last day by a medicine man-in-training. Mike Erickson insisting on using the “turtle spell” to make it rain back in St. Louis.*

*“Being hosted by the Lakota radio station at Wounded Knee. Walking out and finding the whole group spellbound by a Lakota chief sitting on the deck who told them to value their culture and to walk the good road, to remember to do what is*



Continued from pg. 5

*right. Behind him was the creek bed of Wounded Knee, scene of tears and sorrow.*

*“The whole group dancing in the “Grand Entry” at “Ring Thunder Powwow”, having worked all day painting and fixing in Rosebud.*

*“The Gospel is the Gospel when it is news told by word or action or mere presence. The Gospel is the Gospel when the message and the messengers transcend barriers of class or privilege or culture or language.*

*“The Gospel is the Gospel when we bring back so much more than we give.”*

**By Kurt Neilson+**

Rector, Saints Peter and Paul/San Pedro y San Pablo,  
Portland  
Chaplain, Serenity Hospice and Legacy Good  
Samaritan Hospital  
Curate, Emmanuel Episcopal Church, 1991-1995

*“I think the overall experiences I had (with Emmanuel Senior High) certainly played a role in shaping where I am today - I'm now based in Nairobi, Kenya and working across Bangladesh, Ghana, and Zambia on building water and sanitation social enterprises.*

*“I think each experience you have stretches you out of our comfort zone, and makes you realize you can stretch yourself a bit more and a bit more.”*

**By Kate Edgar**



## Emmanuel Book Club—October 27

Join us for our Oct. 27 meeting, when we will discuss Barbara Kingsolver's *Flight Behavior*. This highly acclaimed tale about Monarch butterflies reportedly delights everyone who reads it. *"The extraordinary New York Times bestselling author of The Poisonwood Bible, nominated for the Pulitzer Prize, Barbara Kingsolver returns with a truly stunning and unforgettable work. Flight Behavior is a brilliant and suspenseful novel set in present day Appalachia; a breathtaking parable of catastrophe and denial that explores how the complexities we inevitably encounter in life lead us to believe in our particular chosen truths. Kingsolver's riveting story concerns a young wife and mother on a failing farm in rural Tennessee who experiences something she cannot explain, and how her discovery energizes various competing factions—religious leaders, climate scientists, environmentalists, politicians—trapping her in the center of the conflict and ultimately opening up her world. Flight Behavior is arguably Kingsolver's most thrilling and accessible novel to date, and like so many other of her acclaimed works, represents contemporary American fiction at its finest.*

Our next book, coming up on **December 1**, is Christina Baker Kline's fascinating novel, *Orphan Train*. The Orphan Train Movement was a supervised welfare program that transported orphaned and homeless children from several crowded East-coast cities to foster homes throughout the rural Midwest. New York's Children's Aid Society began the program that operated from 1853 and 1929, and it was later joined by the New York Foundling Hospital. Before the advent of state-run foster care, these two institutions developed a comprehensive plan to relocate some 250,000 children, who were carried to their new homes on “orphan trains” or “baby trains.” There have been a number of non-fiction books written about these children, but this novel presents a totally different twist to the saga of one fictitious child.

Please join us at 7:00 in the "Tree House Room" aka #204...and feel free to invite friends, family, or other Emmanuelites to come with you and share our fellowship and light refreshments. If you have questions or wish to be added to the Book Club email list, please contact Ann McReynolds at 960-0560 or [ARMcR@arm-mra.com](mailto:ARMcR@arm-mra.com).

## Webster-Rock Hill Ministries 2014 Adopt-A-Family Programs

The **Thanksgiving Basket** and Christmas **Adopt-A-Family** programs will begin enrolling clients in early October. Those individuals/groups wishing to adopt a family need to have their registration forms in by **November 7** for Thanksgiving and **November 21** for Christmas. These forms are available on the bulletin board at the entrance to the dining room.

WEBSTER  ROCK HILL  
MINISTRIES

## FALL CLEAN-UP DAY AT EMMANUEL



WORK DAY

Saturday, November 22  
from 8:00 to noon.

We need a host of volunteers for Emmanuel's annual fall clean up. We have a number of important outdoor and indoor projects to complete before winter's arrival.

Please come and bring rakes, shovels, wheelbarrows, etc if you can.

## Jr. High News

At the **Sep. 28** Adult Forum, junior high participants in the **2014 Mission Trip to Kansas City** told their story. Their enthusiasm was very apparent as was the feeling of community they displayed. Before their presentation, the kids joined with Faith Quest and Senior High in a display of solidarity and mission. They all placed on the wall in the dining room, cutout symbols of their hands & feet indicating a promise to help Christ.

On the following Sunday, we gathered in the classroom and, after enjoying Mitch's homemade spice cake, participated in a lesson on prayer. Then we wrote a creed. First, we each wrote our name on a piece of paper and noted something we would like God to do for us. For example, "please give me patience." The papers were then collected in a basket and each child drew the name of a person to pray for daily.

Now about the creed: We read all the things written

on the pieces of paper and categorized them into a creed and something we felt most of us could believe in. Our creed will be displayed in the Jr.Hi. room for the rest of the year. We welcome visitors and suggest that parents occasionally ask their youngsters if they have remembered to pray for their special friend.

Wow!! We've been busy. But, never fear, there is some "just for fun" stuff too. In the afternoon 12 kids and four leaders drove to the farm to enjoy a hayride, corn maze, food and a train ride.

Next time, we'll tell you about our "jam session," retreat and another brown-bag session.

Marie Holt



## Gateway 180 and the Little White Churches

The **Little White Churches** are carried through the church during the offering time at the 9 AM service. Historically the designation for the offering has been to address needs related to children (an orphanage in Haiti, building wells for clean water in Lui, etc.). In an effort to redesignate the collected funds to meet more local needs, the Mission Committee (with the support of the Vestry) has chosen **Gateway 180**, a local homeless shelter for families. Emmanuel has a growing relationship with the 120-bed shelter located in downtown St. Louis: various groups at Emmanuel have made countless brown bag lunches for Gateway 180 to hand out to residents and others needing a healthy lunch or dinner and more recently the FaithQuest and Vacation Bible School programs have traveled to Gateway 180 for service projects. We pray that the relationship between Emmanuel and Gateway 180 continues to grow. The offering from the Little White Churches will certainly help Emmanuel kids to be “Bold in (their) Mission” of supporting Gateway 180.



Tricia Copeland

## Alliance for Interracial Dignity

Thursday, October 30, 2014  
7:00 p.m.



Webster Groves Christian Church (Disciples of Christ)  
1320 W. Lockwood 63122

*Viewing and Discussion Of*  
*“Mirrors of Privilege: Making Whiteness Visible”*  
*by Shakti Butler, Ph.D.*

For Additional Information call:  
(314) 918-4008  
<http://www.talk-heal-change.org>

*The Alliance appreciates the involvement of everyone and will only be as strong as you help make it.*

“We - The Alliance - are  
bringing the community together by  
learning from our collective past,  
challenging the racial status quo &  
building a stronger community”





**SAVE THIS DATE:**

**STAY TUNED**

**THURS. DEC. 18th  
5-7pm**

**WOE-MOE**



**Are you on  
Facebook?**

**Please Join  
our Private  
Facebook  
Group!**

Here's the link:

[https://  
www.facebook.co  
m/  
groups/22976627  
0379592/](https://www.facebook.com/groups/229766270379592/)

**Questions?  
Contact Hilary  
Perkins,  
[hilary.perkins@g  
mail.com](mailto:hilary.perkins@gmail.com)**



**The Episcopal Diocese  
of West Texas**  
*The Bishop Jones Center*

**Office of The Bishop  
The Rt. Rev. Gary R. Lillibridge**

July 31, 2014

The Rev. Martha G. Metzler  
Emmanuel Episcopal Church  
9 South Bompart Ave.  
Webster Groves, MO 63119.

Dear Martha,

Thank you for the donation to the Episcopal Diocese of West Texas for humanitarian relief on the Texas border with Mexico. Our diocesan response will be administered through St. John's Episcopal Church in McAllen and Christ Church Episcopal, Laredo. These are the two locations where the people from Mexico and Central America are being processed.

The people of West Texas and our friends around the country are eager to help the people of the Rio Grande Valley as they respond to this humanitarian crisis. Your donation will be immediately available to McAllen and Laredo so that they, and those with whom they are working, can continue this much needed ministry in a timely fashion. St. John's and Christ Church, in cooperation with other agencies, will oversee the allocation of the funds to buy and distribute all the materials needed.

I, and the World Mission Department of the Diocese of West Texas, thank you for your compassionate gift in this time of great need. Your gift is much appreciated. Please keep this situation and all who are involved in your prayers.

Faithfully,

Gary R. Lillibridge  
Bishop of West Texas

Donation: \$500

## **CLERGY & STAFF**

Dan Appleyard, *Rector (ext 212)*  
 Martie Metzler, *Assistant Priest (ext 218)*  
 Melanie Slane, *Assistant Priest (ext. 211)*  
 Warren E. Crews, *Priest Associate*  
 Paul A. Metzler, *Priest Associate*  
 Roderic D. Wiltse, *Priest Associate*  
 Trent Patterson, *Choir Director*  
 Chuck Peery, *Organist*  
 Kevin Williams, *Christian Youth Formation (ext 213)*  
 Susan Baseley, *Parish Administrator (ext 249)*  
 Susie Feldmann, Phyllis Newcomb, *Staff Assistants*  
*(ext 209)*  
 Bill Simokaitis, *Staff Accountant (ext 210)*  
 Keith Ennis, *Sexton*  
 Kelly Lakies & Dianna Konopka, *Part-time Sextons*  
 Angela MacBryde, *Preschool Director (ext 123)*

## **MINISTRY CHAIRS:**

Tricia Copeland, *Senior Warden*  
 Ann Marie Ruhlin, *Junior Warden*  
 Diana Knapp, *Treasurer*  
 Mark Jordan, *Finance Committee*  
 Tammy Free, Linda Schuchman & JoAnne Warren,  
*Altar Guild*  
 Jane Emerson & Mimi Shipp, *Archivists*  
 Peg Cooper, *Caring Ministries*  
 Lynne Shields & Megan Wren,  
*Environmental Stewardship*  
 David Pluhar & John Liss, *Facilities Management*  
 Andrew Bleyer, Tricia Copeland, *FaithQuest*  
 Bill Cochran, *Men of Emmanuel*  
 Donna Erickson, *Missions*  
 Mart Mitchell, *Parish Family Life*  
 Kathleen Martin, *Worship*

## **Staff Email Addresses**

dappleyard@emmanuelepiscopal.org  
 mmetzler@emmanuelepiscopal.org  
 mslane@emmanuelepiscopal.org  
 parishadmin@emmanuelepiscopal.org  
 kwilliams@emmanuelepiscopal.org  
 sfeldmann@emmanuelepiscopal.org  
 atreas@emmanuelepiscopal.org  
 cpeery@emmanuelepiscopal.org  
 tpatterson@emmanuelepiscopal.org

Church number is 314-961-2393

**In the case of a pastoral emergency after office  
 hours, please call the clergy cell phone at  
 314-324-4115.**

## **BAPTISMAL DATES FOR 2014**

Below are the scheduled dates for Baptism and Baptismal Preparation Session. At least one parent must attend a preparation session before a child may be baptized at Emmanuel. You need not have set a baptismal date to come to one of these sessions.

If you are pregnant or still deciding about baptizing your child here, please come. This is a wonderful opportunity to learn more about baptism.

Call the church office at 961-2393 to make a reservation. A light supper is served.

### **Baptism Dates**

October 26 at 10:00 a.m.  
 November 2 at 10:30 a.m.  
 November 16 at 9:00 a.m.  
 November 30 at 10:30 a.m.  
 December 7 at 9:00 a.m.  
 January 4 at 10:30 a.m.  
 January 11 at 9:00 a.m.

### **Prep Class**

(6:00 p.m.)

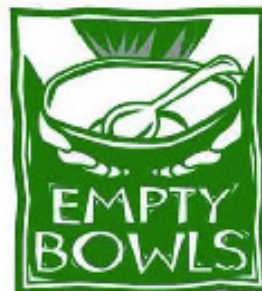
October 22  
 November 18  
 January 6



## **SAVE THE DATE for**

## **EMPTY BOWLS 2014**

a soup supper to benefit Webster-Rock Hill Ministries  
 to be served at First Congregational Church in Webster Groves  
**SUNDAY, NOVEMBER 2, 2014**



**BIRTHDAYS**

**October 14**  
Sandra (Rosie) Wallis

**October 15**  
Julian Appleyard  
Paula Collins  
Anne Lindner  
Drew Perry

**October 16**  
Sandra Fischer

**October 17**  
Megan Wren

**October 18**  
Karen James  
Gavin Perry

**October 21**  
Sarah Ernsky  
Frances Sherrill

**October 23**  
Ann Bain  
Liana Jones

**October 25**  
Phoebe Dunn

**October 27**  
John Liss  
Thomas Schaefer  
Katherine Ziegler

**October 28**  
Gretchen SPalt  
Gary Tappana  
Isaac Weiland

**October 29**  
Alina Castro  
Doris Ferguson  
Rita Rundquist

**October 30**  
Abbot Bleyer  
Suzanne Hooker

**October 31**  
Jane Emerson

**ANNIVERSARIES**



**October 21**  
Richard & Jeannie Keyes

**October 22**  
Kevin & Angie MacBryde

**October 23**  
Jonathan & Jessica McIntosh

**October 26**  
David & Caroline McCarthy

**October 27**  
Thomas & Margaret Schroeder

**October 28**  
Harry & Sharon Prah

**October 17**  
Jonathan & Heidi Hastings

**October 19**  
Matthew Keefer & Tammy Free  
James & Margaret Valenti

**October 20**  
Luther & Susan Clauss  
Daniel & Jacklyn Jones

**ACOLYTE SCHEDULE**

**October 19**  
Team Captain: Isabella Crang  
1st Crucifer: Hannah Myers  
2nd Crucifer: Julianna Crang  
Acolytes: Elijah Myers, Anne Buck, Emma Sabath, Lauren MacBryde

**October 26**  
Team Captain: Jameson Howard  
1st Crucifer: Charles DeYoung  
2nd Crucifer: Thomas Hotaling  
Acolytes: Kendra Howard, Sawyer Buck, Lily Partridge, Taylor Knapp

**November 2**  
Team Captain: Claire Hooker  
1st Crucifer: Isabelle Appleyard  
2nd Crucifer: Matthew Walch  
Acolyte: Emma Sabath, Anne Buck, Sawyer Buck, Lauren MacBryde



**THE PRAYERS OF THE PARISH ARE REQUESTED FOR:**

PLEASE keep the office updated on the progress of those you have placed on this list so our list remains timely.

**ARMED FORCES**

**Parishioners: Ethan Allman, Aaron Faust, Nathaniel Baker, Adam Erickson**  
 Brian Maginn, Christie Maginn's son  
 Jason Martens, Jen Dunn's brother  
 Stephen Carson, Nan Rimbach's nephew  
 Ron Asher, Sara Loyet's nephew

**IN HOSPITAL/MED TESTS or TREATMENT**

**Parishioners: Katie Lawless, Peggy Schroeder, Mary-Margaret Richardson, Jack Shelby, Mary Jane Kuhn**  
 Aaron Crowell, friend of Angie MacBryde  
 Donna Maginn, friend of Dee Margos  
 Pat Price, friend of Jim & Mary Ann Groetsch  
 Michael and Sarah, friends of Betsy Lindner  
 Jodie Johnson, Lissa Johnson's mother  
 Fran Gebhart, Doris Ferguson's daughter  
 Peggy Thacker McCaslin, Kerry Thacker's daughter  
 Vicki Conerly, Maryjane Hotaling's friend  
 Susan Scherer, Janet Dobb's sister  
 Emory Washington, Diocesan Priest  
 Mark Thorpe, friend of Jim & Mary Ann Groetsch  
 Tyler Gans, Sue Smith's grandson  
 Patty Tiernan, Audrey Claxton's friend  
 Bob Rosen, Pam's husband  
 Laurie Hooker Vigdor, Paul & Sue's daughter  
 Anna, Betsy Lindner's friend  
 Chris Eschen, Dexter & Lisanne Schraer's friend  
 Sue Snyder, Nancy McClary's friend  
 Mike Florent, Bill's brother  
 Sue Hannah, Maureen Walsh's friend  
 Jim Flint, Rick Kuhn's cousin  
 Charlie Schaeffer, Tom's father

**LONG TERM MEDICAL NEEDS**

**Parishioners: Caroline Birdsall, Sandra Nelson, Don Rose, Roberta Gehbauer, Grace Koerner, Nan Rimbach, Sophie Owen, Joan Amerman, Rosemary Vorih, Warren Druschky**  
 Rissa Woodley, Ann McReynolds' aunt  
 Margaret Clark, Dick's aunt  
 Ben Schneider, MacBryde's grandson  
 Ann Neukomm, Mart Mitchell's aunt  
 Coline Martines, Michael's mother  
 Annie Mae Fielder, Roberta's mother  
 Gabrielle Nelson, Sandy Nelson's granddaughter  
 Tom & Carolyn Yager, Jim & Mary Ann Groetsch's friends  
 Will Soll, Shari Kelts' ex-husband

**RECUPERATING**

**Parishioners: Cindy Rapp, Eleanor Fletcher, Pat Wiltse, Bev Austin, Rod Wiltse, Mary Kay Horton, Linda James**  
 Steve Wilson, Lynne Shields' friend  
 George Benson, Hilary Perkins step-father  
 Dave Torgeson, Nancy McClary's friend  
 Zach Beaven, Marilyn Keller's grandson  
 Ben Metzler, Martie & Paul's son  
 Ada Martin, Chris Clark's aunt  
 Linda Hodge, Martha LaFata's friend

**SERIOUS ILLNESS**

AV Handleman, Ann McReynolds' friend  
 Dan Scherer, friend of Kuhns  
 Olive Hagen, Mimi Shipp's friend  
 Pam Furrer, Sandy Baker's friend/former ENS teacher  
 Cathy Ammons, Allison Williams' friend  
 Dickie Priest, Betsy Mackey's friend  
 Rachael, Bill & Victoria Hudson's niece  
 Mike Karandief, Chris Knox's family friend  
 Paula Coulton, Don & Stella Spalts' friend  
 Lois Johnson, family friend of Lisanne Schraer  
 Ed Heigl, Ann McReynolds' friend  
 Sharon Geraghty, Lisanne Schraer's friend  
 Carole Smith, friend of Nancy McClary  
 Heather McFadden, Margaret DeYoung's friend  
 Marty Schmitt, Margaret DeYoung's friend  
 Barbara Hulett, Maryellen Bell's friend  
 John Kohler, Sue & Lou Clauss' friend  
 Tammy Stutz & family, Tracy Crews' friend  
 Paula/Jim Spangler, John Mitchell's sister/brother-in-law  
 Debra Dean-Ciriani, Lisa Teczar's friend  
 Jean Pettid, Lisa (Sparks) mother-in-law  
 Jessica Butler, Molly Clark's friend  
 Patricia McGregor, Stella Spalt's cousin  
 Vicki Barmann, Jen Marcus' mother  
 Sue Fritchley, Tom & Sandi Fischer's friend  
 Sharon Baker, Mary Kay Horton's friend  
 Ann Reich, Courtney Poplstein's friend  
 Camille Toney, Courtney Poplsteins friend  
 Dana Edmonds, Jodie Allen's friend  
 Julian Gavor, Kuhn' employee's nephew  
 Kate Bell, Nancy McClary's friend  
 Robert, friend of Jane Emerson  
 Keira Stout, child of Grace Clark's co-worker  
 Jason, PDO parent  
 Jim Florent, Bill's brother  
 Chris Lawrence, Katherine Ziegler's nephew  
 Thom Smith, Lee Nelsen's friend

**SPECIAL NEEDS**

**Parishioners: Jean Weingaertner, Mary Dolores Baca, Mark Gilje**  
 Monte Morgan, former parishioner  
 Ieshia Charging Hawk, friend of adult mission trip group  
 Sue Kohler, Sue & Lou Clauss' friend  
 Jeffrey, Sue Smith's grandson  
 Doug Moody, Mary Jane Kuhn's Godson  
 Andrew Jones, Steve & Lisa Teczar's nephew  
 Charlotte Roberts, Tina Kennedy's mother  
 Robert Bowlin, Brett Newcomb's uncle  
 Mary Jane Carter, Bill (Marilyn) Keller's aunt  
 Maggie & Jemma Moccasin, friends of Adult Mission Trip  
 Greg Goodman, Barb Russell's friend  
 Lynn Messer, Mary Ann Lemonds' friend  
 Katya Soll, Shari Kelt's daughter  
 Debbie Grieder, Sue Baseley's friend  
 Ellen Hogan, Barb Russell's friend

## CALENDAR OF UPCOMING EVENTS

For a complete listing of events, please consult our online calendar at [www.emmanuelepiscopal.org](http://www.emmanuelepiscopal.org)

### Sunday Fall Service Times

8:00 a.m.

9:00 a.m.

10:30 a.m.

5:30 p.m.



#### SUNDAYS

**Jr. High Operation Brown Bag**  
Sunday, Oct. 19 at 11:15 a.m.

**Inquirers' Class**  
Sunday, Oct. 19 at 11:30

**Visit with Bishop Mark McDonald & Brunch**  
Sunday, Oct. 26 at 10:00 a.m.

**Sr. High Group Worship and Einsteins**  
Sunday, Oct. 26 at 10:00 a.m.

**Blood Pressure Screening**  
Sunday, Nov. 2, Dec. 7 after the 10:30 service

**Newcomers Brunch**  
Sunday, Nov. 2 ay 11:30 a.m.

**Veteran's Day Service**  
Sunday, Nov. 9 at 5:30 p.m.

**Missions/ Outreach Committee**  
Sunday, Nov. 16 at 11:30 a.m.

#### MONDAYS

**Vestry Meeting**  
Mon., Oct. 20, Nov. 17 at 7:00 p.m.

**Emmanuel Women's Book Club**  
Monday, Oct. 27 at 7:00 p.m.

**Jr. High Leader's Meeting**  
Monday, Nov. 3 at 6:30 p.m.

**Worship Committee Meeting**  
Monday, Nov. 3 at 6:30 p.m.

**Exec. Committee**  
Monday, Nov. 10 at 5:30 p.m.

**Finance Committee**  
Monday, Nov. 10 at 6:30 p.m.

**Caring Ministries**  
Monday, Nov. 10 at 7:30 p.m.

**Jr. High Vestry Dinner & Vestry Meeting**  
Monday, Nov. 17 at 6:30 p.m.

#### TUESDAYS

**Food Center Shopping**  
Tues., Oct. 21, Nov. 18 at 5:45 p.m.

**Calendar Meeting**  
Tues., Oct. 21 at 6:00 p.m.

**WOE Speaker & Dinner**  
Tues., Oct. 28 at 6:00 p.m.

**Contemplative Prayer in the Chapel**  
Tues., Oct. 28, Nov. 11 at 5:30 p.m.

#### WEDNESDAYS

**Holy Eucharist at Noon**  
Wed., Oct. 15, 22, 29, Nov. 5, 12, 19

**Cherub Choir rehearsals**  
Wednesdays, Oct. 15, 22, 29, Nov. 5, 12, 19 at 6:00 p.m.

**Junior Choir rehearsals**  
Wednesdays, Oct. 15, 22, 29, Nov. 5, 12, 19 at 6:30 p.m.

**Emmanuel Choir rehearsals**  
Wednesdays, Sep. Oct. 15, 22, 29, Nov. 5, 12, 19 at 7:30 p.m.

**Baptism Instruction Class**  
Wednesday, Oct. 22 at 5:45 p.m.

**Fall Fellowship Dinners**  
Wednesday, through Nov. 12

**Emmanuel at Laclede**  
Wednesday, Nov. 19 at 2:00 p.m.

#### THURSDAYS

**Men's Bible Study at Stratton's Restaurant**  
Thu., Oct. 16, 23, 30 at 7:00 am.

**Prayer Shawl Ministry**  
Thu., Oct. 16, 30 at 7:00 p.m.

**Church Foundation Meeting**  
Thu., Oct. 30 at 6:00 p.m.

**Sr. High Leader Meeting**  
Thursday, Nov. 6 at 7:00 p.m.

**MOE Operation Brown Bag**  
Thu., Oct. 23 at 4:45 p.m.

**Noon Operation Brown Bag**  
Thursday, Nov. 13 at noon

#### SATURDAYS

**Facilities Meeting**  
Sat., Oct. 18 at 8:30 a.m.

**Blood Drive**  
Saturday, Oct. 25 at 8:00 a.m.

**Jr. High Retreat**  
Saturday, Oct. 25 at 10:00 a.m.



**Emmanuel Episcopal Church**

9 South Bompert Avenue  
Webster Groves, MO 63119

Address Service Requested

---

Nonprofit Organization  
U.S. Postage  
PAID  
St. Louis, Missouri  
Permit No. 8

---

The next newsletter deadline is **October 21** for the issue to be published on October 28, 2014. All articles and information should be submitted to Sue Baseley (parishadmin@emmanuelepiscopal.org) in the parish office (by email, if possible). Thank You.

### Sunday Worship Schedule and Propers

Child care is available in the nursery (near the Big Bend entrance) from 9:45 a.m. until after the 10:00 a.m. service.  
**Service Schedule: 8:00, 9:00, 10:30 a.m. and 5:30 p.m.**



**Propers for October 19 Nineteenth Sunday after Pentecost:**

Isaiah 45:1-7  
Psalm 96:1-9  
1 Thessalonians 1:1-10  
Matthew 22:15-22

**Propers for November 2 Twenty-first Sunday after Pentecost:**

Micah 3:5-12  
Psalm 43  
1 Thessalonians 2:9-13  
Matthew 23:1-12

**Propers for October 26 Twentieth Sunday after Pentecost**

Leviticus 19:1-2, 15-18  
Psalm 1  
1 Thessalonians 2:1-8  
Matthew 22:34-46

**Propers for November 9 Twenty-second Sunday after Pentecost**

Amos 5:18-24  
Psalm 70  
1 Thessalonians 4:13-18  
Matthew 25:1-13