



www.emmanuelepiscopal.org

Angelus

314-961-2393

Vol. 48, No 15–April 1, 2014

In This Issue

	Page
Martie’s Report	1
Worship During Lent	2
Baptismal Dates	2
Tuesday Lenten Series	3
Wednesday Lenten Series	3
Inquirers’ Class	4
Shoeman Water Project	4
Adult Forum	5
Childcare - Holy Week	5
Maundy Thursday	5
Sr. High News	6
Jr. High News	7
About the Parish Family	7
Book Club	8
Online Giving	9
Birthdays/Anniversaries/ Acolytes	11
Prayers of the Parish	12
Parish Calendar	13
Sunday Propers	14



2014
DEEP IN FAITH
RICH IN LOVE
BOLD IN MISSION

Clergy & Staff listing 10

In the case of a pastoral emergency after office hours, please call the clergy cell phone at 314-324-4115.

**Lent, Easter,
New Life; YEA!**



One of my pleasures this Lent has been a Sunday Inquirers’ Class. Dan Appleyard, Martha LaFata, and I convene and facilitate

the group around the topics of the Baptismal Covenant. Each week two Emmanuelites come and talk to us about their experiences, successful, and not so much, of living one of the baptismal promises. Then the group has a chance to reflect on their own experiences, exploring how their faith has developed, and how they are being drawn into this community of faith and fellowship. It causes those who give the talks, and us, who design the questions for discussion, to reflect upon what we think is important, and how to invite others into the conversation about the ideas, beliefs, and practices that we hold dear.

Our group is quite diverse, not in appearance or ethnic background, but in faith background, life stages and styles, and family status. We are made up of the newly engaged and widowed, a college student under legal drinking age, and folks well beyond social security eligibility. There are parents, grandparents, and those who go home to live with their own parents when school is out. Yet a constant theme I have heard is how much we all find in common as, for one reason or another, we are drawn into this particular community of faith, at this moment in time.

Lent is a time to be reflective, to think about our faith as we are called to it, and to let the seeds of faith grow in us as a community. For some, that means listening for the first time to how our Anglican Tradition understands God’s call. For all of us, there is much to take in. (*See paragraph 1!*)

Lent is a time to come home to God; to feel the welcome of unconditional love. Our role as the Body of Christ, is to makes visceral that welcome to

Continued on pg. 2

Continued from pg. 1

each and every seeker, to welcome them into their place in the Body. But funny thing, as we welcome new folks into the body, the body changes; someone has an idea of something new to do, or a new idea about how to do something we have “always done”, or a question that makes us rethink something we had always taken for granted. As lifting or stretching strengthens and defines the muscles of our physical body, bending and stretching to include newcomers strengthens and defines the Body of Christ in new ways. **In Christianity, new is good; new as in “New Life,” the very thing we celebrate at Easter. As the old body dies, a new body lives in a way we might not even imagine.**


One of the exciting things coming out of this latest group of newcomers is a resurgence of young adults. Some of our newest members are organizing a table (or two!) for Trivia Night. Others are offering hospitality for young adults to get together at their home, with the DeYoungs, who were recruited to start a young adults group just a few short years ago (*anyone else think that time flew by?*) YEA!

Our Lenten group is bearing Easter fruit – especially for YEA which used to mean, and perhaps will mean again, Young Emmanuel Adults.

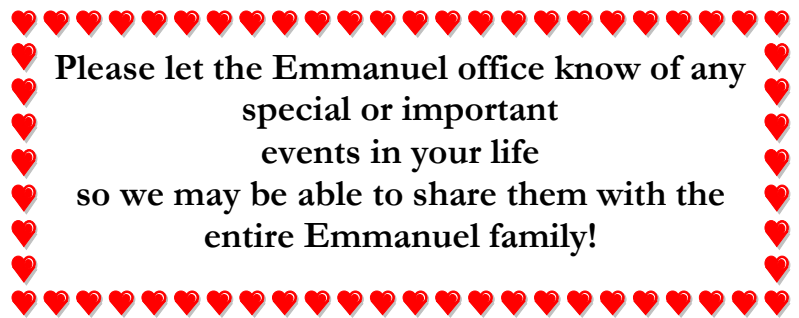
Martie Metzler

Sunday Service

Times:




8:00 a.m.
9:00 a.m.
10:30 a.m.



Please let the Emmanuel office know of any special or important events in your life so we may be able to share them with the entire Emmanuel family!

The Season of Lent



Weekday Worship
During Lent:

Tuesdays:
Contemplative Prayer 5:30 p.m.
2nd & 4th Tuesdays of the month

Wednesdays:
Noonday Eucharist followed by Bible Study with Rod at 12:30.

Fridays:
Holy Eucharist at 7:00 a.m. followed by MOE Breakfasts at 7:30 a.m.

BAPTISMAL DATES FOR 2014

Below are the scheduled dates for Baptism and Baptismal Preparation Session. At least one parent must attend a preparation session before a child may be baptized at Emmanuel. You need not have set a baptismal date to come to one of these sessions.

If you are pregnant or still deciding about baptizing your child here, please come. This is a wonderful opportunity to learn more about baptism.

Call the church office at 961-2393 to make a reservation. A light supper is served.

<p>Baptism Dates</p> <p>Apr. 19 at 7:30 p.m. Apr. 27 at 10:30 a.m. May 4 at 9:00 a.m.</p>	<p>Prep Class (6:00 p.m.) Apr. 8</p>
--	---



Tuesday Night Lenten Series
from March 11 to April 8 at 6:00 p.m.
 In the Dining Room

Come for a potluck supper at 6:00 p.m. and then break into hour-long small groups for five weekly sessions. We'll conclude the evening with Compline (a brief prayer service) at 7:45 p.m. This is an opportunity to strengthen the ties of fellowship, while learning something new and contributing your own ideas and insights to the community.

The Small Group Topics Are:

1. Waging Racial Reconciliation

Led by the Rev. Daniel Appleyard

This five part series will include presentations, short videos reflections and ample time for discussion.

The resources include videos from the Episcopal Church two-day event forum, State of Racism In America. Another "tool" will be a series of "shorts" called "Cracking the Codes –The System of Racial Inequity." We will use these, as well as passages from Scripture and the Book of Common Prayer to enhance our conversation and as we talk about the system of racial inequity in the United States.

2. Saving the Cross: Reimagining the Atonement

Led by The Rev. Dr. Warren Crews

Lenten and Holy Week in particular are difficult for many because of the traditional way that the doctrine of the atonement has been taught:

God sent Jesus into the world to absorb the punishment on the cross that all of us deserve for our sins against God. People ask: what father would do such a horrendous thing to his beloved son?!

Well, it turns out that is only one of four different approaches to explaining the atonement.

We will explore each of these four, critique their strengths and weaknesses, and give everyone a chance to figure out for themselves how to explain God's saving work in Jesus Christ.

Parenting through Lent and Beyond

How do we parent our children given the demands of Post-modern life? Let's discuss the challenges and joys of parenting our children to grow into the Christian faith. Each week we offer an opportunity to kick back, relax and explore a topic of interest in the context of our faith and family life. These topics include:

- Healthy Families
- Managing to keep Sabbath time together
- Caring for spouses, partners and self
- Helping children understand Lent and Easter
- Creating family rituals to nurture the whole family

Our discussions and resources will be geared primarily to parents of young children. Drawing on the resources of faith and family studies, we will have opportunities to learn something new, and share our own ideas, wisdom and experiences as we seek to be evermore faithful in our care and nurture of the children entrusted to us.

This will be geared primarily to parents of children up to age 10 or 11.

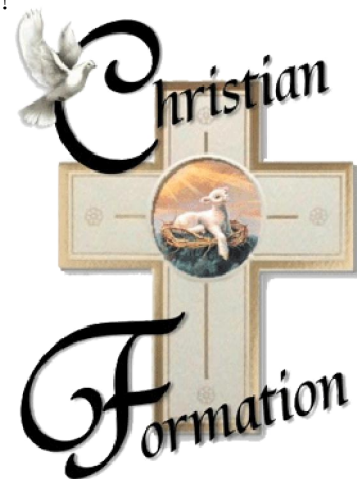
Wednesday evenings from 6-7:30

during Cherub and Junior Choir Practice.

Pizza, salad and dessert for the family at 5:30

Childcare 5:30 –7:30

Please sign up in the Dining Room so we know you are coming and we will have pizza and childcare for your family!



Inquirers' Class Sundays at 11:30 Continues through – April 6

- What are the most important things about being a Christian?
- Why do we come together for worship?
- What do we think about forgiveness?
- Why do we talk about social justice? And servant ministry?
- What does it mean to be a member of a church?

Join us for 5 weeks of exploration of how Episcopalians, and especially Emmanuel's leaders answer as you formulate answers for yourself, meet other Emmanuelites, old and new, and deepen your faith and your bonds to this community of faith.

Who should come?

- Anyone who is curious about the questions above?
- Anyone who is new to Emmanuel and would like to hear from our leaders.
- Anyone who is new to the Episcopal church and would like to learn more about our approaches.
- Anyone who would like to engage in thoughtful reflection about our shared faith.
- Anyone who is willing to make a weekly commitment to this Lenten exploration.

To sign up, or for more information, talk to Martha LaFata or the Rev. Martie Metzler.

Turning used shoes into water for those in need



During Lent the **Mission Committee** is having a collection of shoes as part of the **Shoeman Water Projects**. This organization based in Fenton gathers shoes not worn anymore and turns them into water!. The collected shoes are exported to street vendors in South America, Haiti, India, Kenya and other places where people need affordable shoes. The shoes are given to street vendors who sell them to those individuals who have no shoes for pennies on the dollar. The vendor has a job! And the money generated from exporting the shoes is used to purchase well drilling rigs, water purification systems, and other supplies to bring clean, fresh water to those who thirst!.

So bring the shoes you don't wear anymore, shoes that no longer fit, shoes you should have never bought and sit in the back of your closet as well as children's shoes. If the shoes have shoe strings tie them together and if there are no shoestrings use a rubber band to keep them together, Bring them to church and place them in the **Shoeman box** in the dining room anytime during Lent. Last year 275 pairs of shoes were collected. This year the goal is 300 pairs!

LENTEN ALMS

A special alms box will be present at all services and in the Dining Room during Lent. The Lenten alms will be given to Webster Rock Hill Ministries.

EASTER OFFERING

Our Easter offering will go to the ministry of Episcopal City Mission. ECM is a chaplaincy providing hope and healing to children in detention.



**Adult Forums Sundays, 10:30 a.m.
in the Dining Room
Keeping Lent and Holy Week**

April 6:

Part 5: A Journey through Lent in Literature and Music - Ann Marie Ruhlin

Adult Forums After Lent

April 27:

Environmental Theology – Clint McCann, Eden Seminary

May 4:

Donna Baber, Director of Planned Giving, Lindenwood University



**CHILD CARE DURING
HOLY WEEK SERVICES**

Maundy Thursday - The Nursery will be open from 6:00 to 8:30 p.m.

Palm Sunday - The Nursery will be open for both 9:00 and 10:30 a.m. services.

Easter Sunday - The Nursery will be open for both 9:00 and 10:30 a.m. services.



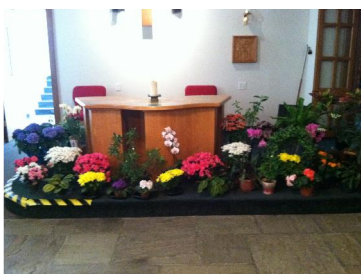
**MAUNDY THURSDAY
April 17, 2014**

**6:00 p.m. Maundy Thursday Dinner
(No Charge)**

**7:00 p.m. Maundy Thursday
Eucharistic Service**

9:00 p.m. Garden of Gethsemane Vigil

**Sign up sheets for Dinner and Vigil
are in the dining room**



**Easter Lily
Delivery**

As Easter approaches all of us are busy, but stop and consider delivering an Easter Lily from the sanctuary of Emmanuel!



The **Caring Ministries Committee** is requesting volunteers for the wonderful task which can be done on **Easter day April 20, 2014 (after the 10:30 a.m. service)** or anytime the first week after Easter. Even though the church will be closed the day after Easter, members of the Caring Ministries Committee will be in the dining room for lily pickup from 10:00 a.m. to noon.

Volunteers are needed to deliver the beautiful lilies that will adorn the sanctuary as well as the rest of the church for Easter. These plants will be taken to shut-ins and others on a list that is prepared by the clergy and office staff.

If you would like to participate in this very important ministry of reaching out to fellow Emmanuelites and others please contact Peg Cooper at 314-821-1012 or coopermh@slu.edu by **Tuesday April 15, 2014.**

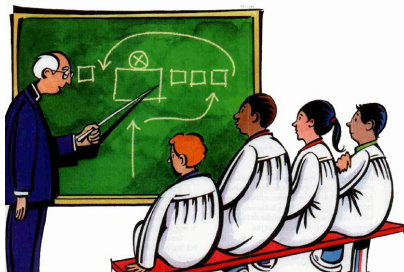
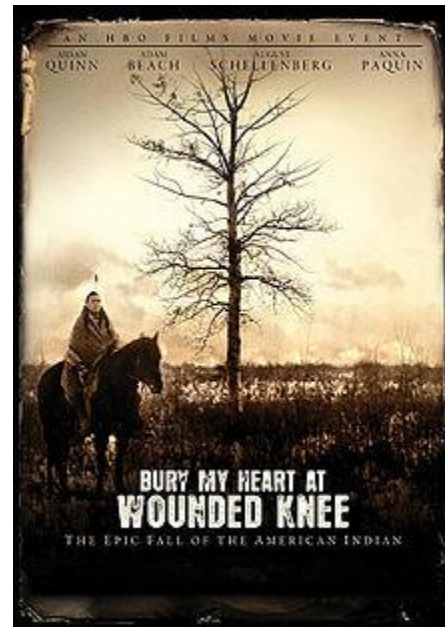
SR HI PREPARING FOR MISSION TRIP

The Senior High Youth Group is deep in preparation for its summer mission to the Lakota Sioux in Rosebud, South Dakota. “One of the most important things we will be doing will be conducting a day camp for some of the children on the reservation,” said Youth Director **Kevin Williams**. “So we have the youth started designing the curriculum and learning as much as we can about Sioux history and culture.”

The group will watch the HBO production of “Bury My Heart at Wounded Knee” April 27 in an effort to understand attempts to assimilate the Sioux into white society shortly after the Indian Wars ended. Many experts say that effects of that effort still linger and are a large part of the problems which plague Native American society today. Two of the counties on the Rosebud Reservation are the two poorest counties in the country.

“The adult mission trip has been going to Rosebud for years,” said **Williams**, “and the adults have been very helpful as we prepare the youth for the trip.”

The group had a very successful visit to Laclede Retirement Community last month. “It was wonderful experience for the youth and the people we visited,” said Youth Leader **JoAn MacBryde**. “The kids were great in a situation most of them were not used to. I know the adults enjoyed it, and I hoped the youth learned from it.”



**Pre-Easter
Acolyte Refresher
Training**

**Sunday, 6 April
at 11:30 a.m.**

Pizza will be served

Please Note:

The Senior High
Parents' Mission Trip
Meeting
is Sunday, April 6
at 11:30 a.m.

Jr. High Update

Junior High Youth have been discussing Lent and the events leading up to the crucifixion. And on March 23, we made pictures of the Stations of the Cross – all fifteen of them in just one session. Good work kids. We invite you to come down to the Junior High Classroom on April 6 to see the pictures and perhaps you would like to read the accompanying prayers as you walk the path with Jesus. We think that you, as Mitch and I did, will find them just as moving as the professionally produced ones hanging in the sanctuary on Good Friday.

Also, in the evening of April 6, the youth are to be treated to a dinner from 5 to 7. This is a special dinner in a couple of ways. The kids don't have to do any work. Just show up with an appetite. The leaders will take care of it all. Also, the theme is a very interesting one. More about this in the next newsletter.

Attendance has dropped off a bit during the past three months. Terrible weather, spring breaks, holidays and outside activities contributed to the situation. But we are never disheartened. To the contrary, we give God thanks for the faithful who do come together to learn, share, pray and laugh with us. Yes, and to snack.

Marie Holt

Junior High P.S.

When you do your spring cleaning, please don't pitch any empty jelly/jam/marmalade jars. Take them to Emmanuel in a bag with my name on it. Jar costs have risen almost 40%. Recycling jars can help us keep our prices at last year's levels.

MH



Reminder:

The handicap-only parking spots are for **ALL** Church events – Not just Sundays!



About the Parish Family



The sympathy of the parish is extended to **John McCarthy** on the March 19 death of his wife of 67 years, **Mary Ellen**. Sympathy is also extend to **Mary Lou, Mike, Kathryn, and Meaghan McGuire** and **David, Caroline, and Maeve McCarthy**. Mary Ellen spread sunshine wherever she went and will be dearly missed by all who knew her. A service celebrating her life will be held at Emmanuel at 4:00 p.m. on Thursday, **April 3**.

We also extend our sympathy to **Paul and Martie Metzler** on the March 22 death of their dear friend **Father Tim Hall** in Syracuse.

Our sympathy goes to Bob and Mary Jane Schnitker and their family on the death of Bob's sister, **Daryl Bopp**, in Joplin, Missouri.

May light perpetual shine upon them.



Bill and Carla Simokaitis are going to Africa!

In case you didn't know, our next trip is quickly approaching. We will depart from St. Louis, on April 15th, and return on June 4th. Ministry will begin in Nairobi.

We will then travel by train to Mombasa to work at our office with Jonathan, Popsy, Laz, and Pastor Daniel. It has been 10 months since our last visit. Our plan is to remain in Mombasa for 3 weeks. Then on to Kimilili.

We are also excited to be the eyes and ears of ThriVe St. Louis, as they entrust us to visit a potential location in Kampala, Uganda. Carla has been to orientation training with ThriVe allowing her to not only transport pregnancy test kits but to actually administer them. Please pray for us traveling by vehicle across the border from Kenya into Uganda.

Bill & Carla

From the Ohio Wesleyan University Mission Trip Visitors

To Clark and the rest of the Emmanuel community,

Thank you so much for allowing us to stay and do our service-learning trip through your church. I can't tell you enough how wonderful the space that you worship in is, and how great the facilities are. Emmanuel is truly a place to love.

Blessings,

Kyle Simon and the St. Louis Mission Team

During Bill's mission trip, **Dianne Klein** will be serving as **Staff accountant**. Diane has served in similar positions at the Jewish Family and Children's Center and in various corporate offices.

We are looking forward to Dianne's temporary assistance at Emmanuel.

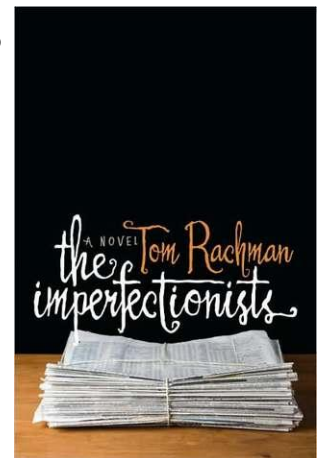
Emmanuel Women's Book Club

Emmanuel Women's Book Club will meet on Monday evening, **April 28** to discuss Tom Rachman's *The Imperfectionists: A Novel*. Here's a bit about it from Publishers Weekly:

In his zinger of a debut, Rachman deftly applies his experience as foreign correspondent and editor to chart the goings-on at a scrappy English-language newspaper in Rome. Chapters read like exquisite short stories, turning out the intersecting lives of the men and women who produce the paper—and one woman who reads it religiously, if belatedly.....As the ragtag staff faces down the implications of the paper's tilt into oblivion, there are more than enough sublime moments, unexpected turns and sheer inky wretchedness to warrant putting this on the shelf next to other great newspaper novels.

Please join us at 7:00 in the "Tree House Room" aka #204...and feel free to invite friends, family, or other Emmanuelites to come with you and share our fellowship and light refreshments.

If you have questions or wish to be added to the Book Club email list, please contact **Ann McReynolds** at 960-0560 or ARMcR@arm-mra.com.



Julia Bullock, Former Emmanuel Parishioner, Gives New York Recital Debut at Merkin Concert Hall

By [ANTHONY TOMMASINI](#) MARCH 12, 2014

Julia Bullock, with the pianist Renate Rohlfing in the Young Concert Artists series at Merkin Concert Hall. Credit Ruby Washington/The New York Times



We began our new program offering **Online Giving** through our Website www.emmanuelepiscopal.org back in May of last year . **It has been a success!** The **Online Giving** process offers you the opportunity to make secure, automatic contributions to Emmanuel, directly from your bank or credit card.

Did you know that there is an option that allows you to note special instructions for your gift?

Just like a memo line on a check.

We want to thank all of you who have chosen to use **Online Giving**, and would like to recommend this option if you haven't tried it yet.

Potential Benefits for You

- No check writing
- Safe, secure, and confidential
- Direct transfers from your checking, savings, or credit card
- Scheduled recurring or one-time donations
- Ability to change a gift or account any time
- Choose from among all funds, pledges, mission ECF, youth, discretionary, food center, etc.
- Personal benefits of using your credit card

Benefits for the Church

- Streamlines administrative effort
- One process accommodates all funds
- Online giving is linked to existing system
- Provides giving history for tax statements
- Reaches a wider demographic of givers

CLERGY & STAFF

Dan Appleyard, *Rector (ext 212)*
 Martie Metzler, *Assistant Priest (ext 218)*
 Warren E. Crews, *Priest Associate*
 Roderic D. Wiltse, *Priest Associate*
 Trent Patterson, *Choir Director*
 Chuck Peery, *Organist*
 Kevin Williams, *Christian Youth Formation (ext 213)*
 Susan Baseley, *Parish Administrator (ext 249)*
 Susie Feldmann, Phyllis Newcome, Mary Kay Horton
Staff Assistants (ext 209)
 Bill Simokaitis, *Staff Accountant (ext 210)*
 Keith Ennis, *Sexton*
 Kelly Lakies & Dianna Konopka, *Part-time Sextons*
 Glenn Dunn, *Information Technology (ext 240)*
 Angela MacBryde, *Preschool Director (ext 123)*

MINISTRY CHAIRS:

Tricia Copeland, *Senior Warden*
 Ann Marie Ruhlin, *Junior Warden*
 Diana Knapp, *Treasurer*
 Mark Jordan, *Finance Committee*
 Tammy Free & Linda Schuchman, *Altar Guild*
 Jane Emerson & Mimi Shipp, *Archivists*
 Peg Cooper, *Caring Ministries*
 Lynne Shields & Megan Wren,
Environmental Stewardship
 David Pluhar & John Liss, *Facilities Management*
 Andrew Bleyer, Tricia Copeland
 & Angie MacBryde, *FaithQuest*
 Bill Cochran, *Men of Emmanuel*
 Donna Erickson, *Missions*
 Mart Mitchell, Mike & Maureen Walsh,
Parish Family Life
 Kathleen Martin, *Worship*

Staff Email Addresses

dappleyard@emmanuelepiscopal.org
 mmetzler@emmanuelepiscopal.org
 parishadmin@emmanuelepiscopal.org
 kwilliams@emmanuelepiscopal.org
 sfeldmann@emmanuelepiscopal.org
 atreas@emmanuelepiscopal.org
 gdunn@emmanuelepiscopal.org
 cpeery@emmanuelepiscopal.org
 tpatterson@emmanuelepiscopal.org

Church number is 314-961-2393

**In the case of a pastoral emergency after office
 hours, please call the clergy cell phone at
 314-324-4115.**



SPRING CLEAN UP DAY

Plan to attend the Spring Clean Up Day **Saturday, April 12.** This is our Spring Clean-up day focusing on the general campus and grounds.

Please note we will start at 8:00 a.m. and go through the morning. Lunch will be provided.

TRIVIA NIGHT AT EMMANUEL KENTUCKY DERBY EVE

Friday, May 2, 2014

\$20.00 per person

**Doors open at 6:30 PM
 Games begin at 7:00 PM**

**Proceeds go to missions
 & outreach of Emmanuel**



BIRTHDAYS



April 6
 Madeline Gregston
 Christine Kraeger
 Delores Margos
 Kelsey Mitchell

April 7
 Charles Miller
 Susan Mitchell

April 8
 David Buck,
 Mary Killion
 Charles Martin
 Amy Ryan
 Clayton Smith

April 9
 Samuel (Scot)
 Copeland
 Joel Crews
 Margaret Rowe
 Joseph Sanders

April 11
 Richard Keyes
 Barbara Russell

April 12
 Madison Duke
 Masen Hornberger
 Kathryn McGuire
 Courtney Poplstein
 Jessica Schunke
 Karen Verstraete

April 13
 Chalegne O'Brien
 Robert Shillito

April 14
 Keith Ennis
 Sarah Hornberger
 Lucy Hubert
 Katherine
 Schuchmann
 Laura Ullmann

April 15
 Charlotte (Tina)
 Kennedy

April 16
 Christian (Fitz)
 Hartwig
 Daniel Jones
 Adam Kopff
 Jennifer Marcus
 Erickson (Clay) Moss
 Patti Rauh

April 17
 Candace Hooker
 Shelley Layton

April 18
 Kelsey Maginn

ANNIVERSARIES



April 10
 Charles (Judd) and Marie Holt

April 11
 Dale and Judy Collier

April 16
 Thomas and Traci Cahill
 Jack and Patricia Shelby

April 22
 John and Ann Begemann

ACOLYTE SCHEDULE

April 6, 2014
 Team Captain – Thomas Florent
 1st Crucifer – Isabelle Appleyard
 Acolytes: Matthew Walch,
 Emma Sabath, Lily Partridge

April 13, 2014
 Team Captain – Clayton Moss
 1st Crucifer – Maia Langdon
 Acolytes: Jack Love, Clio
 Langdon, Thomas Hotaling

April 20, 2014
 Team Captain – Charles
 DeYoung
 1st Crucifer – Hannah Myers
 Acolytes: Maia Langdon, Emma
 Sabath, Clio Langdon, Elijah
 Myers, Matthew Walch, Tom
 Florent, Jack Love

April 27, 2014
 Team Captain – Claire Hooker
 1st Crucifer – Clayton Moss
 Acolytes: Thomas Hotaling,
 Anne Buck, Sawyer Buck



**Are you on
 Facebook?**

**Please Join our
 Private Facebook Group!**

Lots of good information is posted there:

- updates on church members and their families
- sign-up for upcoming events
- find out when the service times change
- what are we serving at our fellowship dinners?
- mission trips? When? Where?

Here's the link:

<https://www.facebook.com/groups/229766270379592/>

Questions? Contact Hilary Perkins, hilary.perkins@gmail.com

PRAYERS OF THE PARISH ARE REQUESTED FOR:

PLEASE keep the office updated on the progress of those you have placed on this list so our list remains timely.

ARMED FORCES

Parishioners: Ethan Allman, Aaron Faust, Nathaniel Baker, Adam Erickson

Brian Maginn, Christie Maginn's son
David Benning, Dorothy Saunders' nephew
Jason Martens, Jen Dunn's brother
Stephen Carson, Nan Rimbach's nephew
Ron Asher, Sara Loyet's nephew
Gabriel Stone, Dorothy Saunders' nephew

IN HOSPITAL/MED TESTS or TREATMENT

Parishioners: Jen Dunn, Katie Lawless, Ann Bain, John Kaiser, Mary Dolores Baca, Peggy Schroeder

John Berrong, Feldmann's great-nephew
Scott Edenson, M. Rowe's niece's husband
Aaron Crowell, friend of Angie MacBryde
Finn Murphy, friend of Kuhn's
Donna Maginn, friend of Dee Margos
Pat Price, friend of Jim & Mary Ann Groetsch
Anna, friend of Betsy Lindner
Kenny Borino, Janet Dobbs' brother
Jodie Johnson, Lissa Johnson's mother
Susan Serfas, Sandi & Tom Fischer's friend
Fran Gebhart, Doris Ferguson's daughter
Peggy Thacker McCaslin, Kerry Thacker's daughter
Vicki Conerly, Maryjane Hotaling's friend
Susan Scherer, Janet Dobb's sister
Emory Washington, Diocesan Priest
Mark Thorpe, Groetsch's friend
Mark Drew, Groetsch's friend
Linda Park, Laura McCord's cousin

**LONG TERM MEDICAL NEEDS**

Parishioners: Caroline Birdsall, Sandra Nelson, Don Rose, Roberta Gehbauer, Laura Ullman, Grace Koerner, Nan Rimbach, Sophie Owen, Joan Amerman

Rissa Woodley, Ann McReynolds' aunt
Margaret Clark, Dick's aunt
Ben Schneider, MacBryde's grandson
Ann Neukomm, Mart Mitchell's aunt
Celine Martines, Michael's mother
Annie Mae Fielder, Roberta's mother
Gabrielle Nelson, Sandy Nelson's granddaughter

RECUPERATING

Parishioners: Rosemary Vorih, Edythe Pangle,
Laura Williams, Betsy's mother
Steve Wilson, Lynne Shields' friend
George Benson, Hilary Perkins step-father
Erwin & Adeline Branahl, Sandy Cooper's parents
Dave Torgeson, Nancy McClary's friend
Mark Friedman, Ann McReynolds' friend

SERIOUS ILLNESS**Parishioners:**

Maggie & Jemma Moccasin, Adult Mission Trip friends
Dan Scherer, friend of Kuhns
Don Black, Katherine Ziegler's friend
Olive Hagen, Mimi Shipp's friend
Pam Furrer, Sandy Baker's friend/former ENS teacher
Cathy Ammons, Allison Williams' friend
Dickie Priest, Betsy Mackey's friend
Rachael, Bill & Victoria Hudson's niece
Alvin Stouffe, Bill Florent's brother-in-law
Mike Karandief, Chris Knox's family friend
Paula Coulton, Don & Stella Spalts' friend
Lois Johnson, family friend of Lisanne Schraer
Ed Heigl, friend of Ann McReynolds
Sharon Geraghty, friend of Lisanne Schraer
Carole Smith, friend of Nancy McClary
Stephanie Duensing, Lissa Johnson's sister
Heather McFadden, Margaret DeYoung's friend
Marty Schmitt, Margaret DeYoung's friend
Barbara Hulett, Maryellen Bell's friend
Cathy Sheldon, Katie McGuigan's daughter
Janet Klumpp, Rod & Pat Wiltse's friend
John Kohler, Sue & Lou Clauss' friend
Tammy Stutz & family, Tracy Crews' friend
JoAnne Bryant, Becki Jacoby's aunt
Paula/Jim Spangler, John Mitchell's sister/brother-in-law
Tim Daugherty, Debby Long's son
Debra Dean-Ciriani, Lisa Teczar's friend
Jean Pettid, Lisa (Sparks) mother-in-law
Jessica Butler, Molly Clark's friend
Patricia McGregor, Stella Spalt's cousin
Vicki Barmann, Jen Marcus' mother
Bob Rosen, Pam's husband
Carole Edwards, Marilyn Keller's friend
Sue Fritchley, Tom & Sandi Fischer's friend
John Mark, Mimi Shipp's nephew

SPECIAL NEEDS

Parishioners: Jean Weingaertner, Warren Druschky Robert Tate

Monte Morgan, former parishioner
Ieshia Charging Hawk, friend of adult mission trip group
JoAnne Hansen, Eleanor Fletcher's sister-in-law
Mark A. Baxley, Ruth's son
Sue Kohler, Sue & Lou Clauss' friend
Jeffrey, Sue Smith's grandson
Doug Moody, Mary Jane Kuhn's Godson
Andrew Jones, Steve & Lisa Teczar's nephew
Charlotte Roberts, Tina Kennedy's mother
Robert & Kathleen Bowlin, Brett Newcomb's aunt & uncle
Cathy Jones, Tom's sister
Tom & Carolyn Yager, Groetsch's friends
Rev. Robert & Pat Klein, Groetsch's friends
Virginia, Martha Kauffmann's mother

CALENDAR OF UPCOMING EVENTSFor a complete listing of events, please consult our online calendar at www.emmanuelepiscopal.org**WINTER SCHEDULE****Sunday Holy Eucharist:**

8:00, 9:00, 10:30 a.m. & 5:30 p.m.

SUNDAYS**Inquirer's Class**

Sunday, Apr. 6 at 11:30 a.m.

Pre-Easter Acolyte Training

Sunday, April 6 at 11:30 a.m.

Sr. High Parents Mission Trip Meeting

Sunday, April 6 at 11:30 a.m.

Palm Sunday

April 13

Easter Sunday

April 20

Jr. High Operation Brown Bag

Sunday, April 27 at 11:15 a.m.

Jr. High Youth & Parent Meeting - Mission Trip

Sunday, April 27 at 1:00 p.m.

MONDAYS**Stewardship Meeting**

Monday, April 7 at 6:00 p.m.

Jr. High Leader Meeting

Monday, April 7 at 6:30 p.m.

Executive Committee Meeting

Monday, April 14 at 5:30 p.m.

Finance Committee Meeting

Monday, April 14 at 6:30 p.m.

Caring Ministries Meeting

Monday, April 14 at 7:30 p.m.

Vestry Meeting

Monday, April 28 at 7:00 p.m.

TUESDAYS**Contemplative Prayer in the Chapel**

Tuesday, April 8 and 22 at 5:30 p.m.

Baptism Instruction Class

Tuesday, April 8 at 6:00 p.m.

Lenten Potluck Supper

Tues., April 8 at 6 p.m.

Lenten Program

Tues., April 8 at 6:45 p.m.

WEDNESDAYS**Holy Eucharist at Noon**

followed by Bible Study with Rod

Wed., Apr. 2, 9, 16, 23 at noon

Family Lenten Pizza Dinner

Wed., Apr. 2, 9 at 5:30 p.m.

Family Lenten Series

Wed., Apr. 2, 9 at 6:00 p.m.

Food Center Shopping

Wed., April 9 at 5:45 p.m.

Holy Week Eucharist

Wed., April 16 at 6:00 p.m.

Spring Fellowship Dinner

Wed., April 23

THURSDAYS**Men's Bible Study at Stratton's Restaurant**

Thursday, Apr. 3, 10, 17, 24 at 7:00 a.m.

Prayer Shawl Ministry

Thursday, April 3 at 7:00 p.m.

Sr. High Group Leaders Meet

Thursday, April 3 at 7:00 p.m.

Noon Operation Brown Bag

Thursday, April 10 at noon

Calendar Meeting

Thursday, April 10 at 6:00 p.m.

Maundy Thursday Dinner

Thurs., Apr. 17 at 6:00 p.m.

Maundy Thursday Service

Thurs., Apr. 17 at 7:00 p.m.

Garden of Gethsemane Watch

Thurs., Apr. 17 at 9:00 p.m.

MOE Operation Brown Bag

Thursday, Apr. 24 at 4:45 p.m.

FRIDAYS**Lenten Eucharist**

Fri., Apr. 4, 11 at 7:00 a.m.

Lenten MOE Breakfasts

Fri., Apr. 4, 11 at 7:30 a.m.

Good Friday Liturgy

Fri., Apr. 18 at noon

Stations of the Cross Pilgrimage

Fri., Apr. 18 at 1:00 p.m.

Good Friday Tenebrae at Christ Lutheran

Fri., Apr. 18 at 7:00 p.m.

SATURDAYS**Spring Clean Up Day**

Sat. Apr. 12 from 8 - noon

Holy Saturday Service

Sat., Apr. 19 at 9:00 a.m.

Easter Vigil Service with Baptism

Sat., Apr. 19 at 7:30 p.m.



Emmanuel Episcopal Church

9 South Bompert Avenue
Webster Groves, MO 63119

Address Service Requested

Nonprofit Organization
U.S. Postage
PAID
St. Louis, Missouri
Permit No. 8

The next newsletter deadline is **April 8** for the issue to be published on April 15, 2014. All articles and information should be submitted to Sue Baseley (parishadmin@emmanuelepiscopal.org) in the parish office (by email, if possible). Thank You.

Sunday Worship Schedule and Propers

Child care is available in the nursery (near the Big Bend entrance) from 8:45 a.m. until after the 10:30 a.m. service.

Service Schedule: 8:00, 9:00, 10:30 a.m. and 5:30 p.m.

Propers for April 6
The Fifth Sunday in Lent

Ezekiel 37:1-14
Romans 8:6-11
John 11:1-45
Psalm 130



Propers for April 20 Easter Day

Acts 10:34-43 *or* Jeremiah 31:1-6
Colossians 3:1-4 *or* Acts 10:34-43
John 20:1-18 *or* Matthew 28:1-10
Psalm 118:1-2, 14-24

Propers for April 13 Sunday of the Passion: Palm Sunday
The Liturgy of the Palms

Matthew 21:1-11
Psalm 118:1-2, 19-29
The Liturgy of the Word
Isaiah 50:4-9a
Philippians 2:5-11
The Passion Narrative according to Matthew
Psalm 31:9-16

Propers for April 27
The Second Sunday of Easter

Acts 2:14a, 22-32
1 Peter 1:3-9
John 20:19-31
Psalm 16