



www.emmanuelepiscopal.org

Angelus

314-961-2393

Vol. 48, No 3–October 1, 2013

In This Issue

	Page
Stewardship Campaign	1
WOE Movie	1
Message From Burnell	2
Emmanuel Play Readers	3
Emmanuel PDO News	3
Aubrey Atwater Concert	3
Food Center News	3
Bishop’s Visit	4
St. Francis Blessing	5
Environmental Stewardship	5
Jr. High News	6
FaithQuest	6
Senior High News	6
Blood Drive	7
Rummage Sale	8
Vestry Vibes	8
Birthdays/Anniversaries/ Acolytes/ Baptismal Dates	9
Prayers of the Parish	10
Parish Calendar	11
Sunday Service Times	11
Sunday Propers	12

Clergy & Staff listing 7

In the case of a pastoral emergency after office hours, please call the clergy cell phone at 314-324-4115.

**Reminder - Fall Stewardship Campaign:
We are Rich in Love!**



Share your love by writing a note to an Emmanuel family.

Don't forget to RSVP to your invitation to participate in this year's fall stewardship campaign!

A stewardship table will be set up before and after church where you can RSVP and let us know who you will be writing.

All completed notes should be sealed in an envelope and placed in the offering plate.

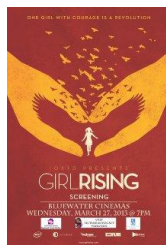
The church will mail them for you.

For more information or to RSVP, please contact:

Lissa Johnson - 314-781-0950; ejohnson@wustl.edu

Mark DeYoung - 314-962-8846; mdeyoung@stonetek.com

**WOE Movie - *Girl Rising*
October 20 at 2:00 p.m.**



Around the world, millions of girls face barriers to education that boys do not. And yet, when you educate a girl you can break cycles of poverty in just one generation. **Girl Rising** is a groundbreaking film that has already been seen by millions. It's also a movement for girls' education.

WOE (with Rector assistance!) purchased the feature film, **Girl Rising**, for a one-time showing. This film, narrated by Meryl Streep, Anne Hathaway, Selena Gomez and others, tells the stories of nine incredible girls across the globe. Using the power of storytelling and film, shared with and by Women of Emmanuel, we will spread the message that investing in girls benefits everyone.

According to the film agreement this will be a private showing, by invitation. We will have *limited seating for 200*. We hope you will invite

Continued on Page 2

Continued from Page 1

a friend, daughter, niece, neighbor, etc. Because of limited seating we will require RSVP's. By Sunday 10/3 we will have a Facebook page set up for this event which will allow you to RSVP. Alternatively you can call the office or sign up in the dining room.

There is no charge for the film, but we will take any donations to defray the cost of renting a large format screen & projector as we will be watching it in the sanctuary. After the film we will have a short panel discuss in the dining room and discuss how WOE might get involved locally with girls' education issues.

Date: Sunday October 20, 2013
 Where: Emmanuel Episcopal Church
 Time: 2:00 p.m. Film
 Followed by short panel
 discussion in dining room with
 light refreshments
 Babysitting will be provided

Other: Trailer of film:
<http://www.youtube.com/watch?v=BJsvklXhYaE>

From Burnell: Gone, but not forgotten...

From time to time, I bathe like Midas in gold, in the cards and letters and mementos you gave me at my retirement. There are kids' drawings, pasted valentine hearts with scrawled messages, greeting cards in my mailbox, cards from the dining hall, poems and paper napkins, some photos, and knowledge of how generously you gave to support the women's missions I designated to receive your gifts. Wow. It has been a love feast. Thank you for the intimate pastoral moments you allowed me to share with you, for the laughs and hugs, for the roaring successes and howling failures of projects we were bold enough to try together. Are we a missional church or what?!

How am I? Better, thanks. Progress is being made on the hypertension and new routines established. This blessed Sabbath has included some short road trips, many naps, the discovery of cartoon computer games, quilting scraps everywhere, and a happier dog. I am more in touch with our small, but close family. I have been designated the coach as my granddaughter tries to find the right college. There is even a fairy tale wedding coming up in our family's future.

Know I am praying for all of you, and, again, thank you.

Deacon Burnell True Esbenschade

Where are the funds going that were collected in Deacon Burnell's name?



The Mothers League is an important decision-making group in the Diocese of Lui, South Sudan. Mother Dokolo, as the wife of the bishop, is considered the head of this group. It is hoped that even a relatively small amount of money will supply school tuition and materials for a child of a member of the clergy to attend school.

We heard Rachna Goel, founding attorney of **Jane Doe Advocacy**, speak at an Adult Forum last year. She explained the need for this non-profit organization which provides legal services to indigent women who need the protection of the Court. Money

can be used to pay required court costs and filing fees.

Lydia's House has been one of our mission projects for three years. Chaplain Carolyn Heard has also spoken to our Adult Forum and will distribute for us gift cards in small denominations from Walgreen's.

These cards can supply mothers with emergency or other supplies from a drugstore within walking distance of this shelter from domestic abuse.

Beyond the monetary value, each gift provides hope for that day and knowledge that there are others who are aware of their plight and desire to help.

Thanks to your generous contributions, these seeds will be sown far and near.

Junior High News:

On August 25, sixth, seventh and eighth-grade kids and their parents congregated in the junior high room on the first floor of Emmanuel. They were there to meet all the leaders – young and old – who will work with, play with and teach their children during the coming year. They were given a preliminary draft of an activities calendar, a “Mission Statement” and some suggestions of what would be helpful to make for a satisfying year.

After the meeting, the parents went home and the kids piled in leaders' cars and it was off to Kirkwood Park for a picnic and some games. All three age groups were represented and displayed the type of togetherness that has made the Emmanuel youth group so successful.

On Sunday, September 15, twelve kids met for their first Rite 13 class. It was mostly a “getting-to-know-you” time with the ubiquitous snack and one of the kids offering an opening prayer.

We were scheduled on this first Sunday of the new program season to make Brown Bag lunches for the homeless. One of the veteran Brown Baggers explained exactly what was to happen and we spoke of the love and respect we must display as we did God's work in this way. Complete chaos existed for several minutes, with tables full of bread and sandwich fixings and empty containers and wrappers on the floor and tables. But, as usual, it all came out just right. Nobody can figure out how that happens but the first thing you know, everything is picked up, tables clear, lunch bags are packed into boxes and the kids are carrying them up to the waiting parent who delivers them to the shelter.

God at work through the hands of children.

Rite 13 will meet again on September 22 and 29 at 10:15 in the Jr. High Classroom. On September 29, we will return at 5:00 for Movie/Pizza night. Parents can pick up their kids at 7 :30.

We look forward to a great year.

Marie Holt

A Great Beginning to FaithQuest!

We have 49 Children registered for our FaithQuest program and we've had a great start to the year!

We meet each Sunday from 10:30 to 11:15 and we'd love to have all school-aged children join us. A registration form can be found on the website <http://emmanuelepiscopal.org/faith-formation.html> or for more details you can contact Tricia Copeland at 314-283-5012 or copelandtl@hotmail.com

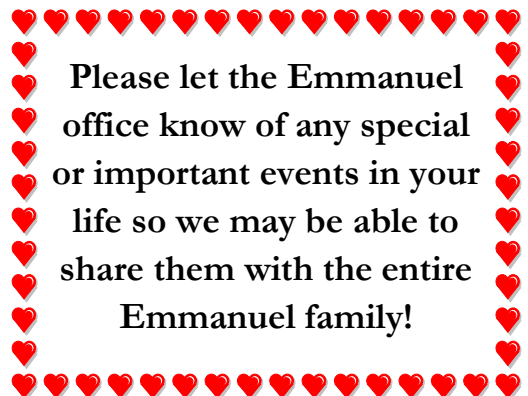
Senior High News

“J2A stands for Journey to Adulthood,” said Youth Director Kevin Williams. It takes place during the four year’s of high school, and it’s designed to help the youth get through a critical—and difficult—time in their lives.”

“This year,” said youth leader Ian MacBryde, “we are focused on trying to help the youth understand their place in the Episcopal Church. That process involves a lot of uncertainty and a lot of questions. We hope to be able to help the young people through that. We’re off to a lively start.”

The group’s busy schedule for the fall includes a number of faith, fellowship and service opportunities, and confirmation of some of the younger members October 13.

There is also a retreat to Deutsch’s Cabin October 19 and 20 during which the youth lead Morning Prayer on a bluff overlooking the golden autumn of the Gasconade River.



Emmanuel Play Readers

Date Change - Due to the Cards making the playoffs!

Emmanuel Play Readers' is gearing up for their next production, but we aren't quite sure what it will be. Your producers are hard at work reading and selecting the best play for your viewing pleasure. So, mark your calendars for **Friday, October 25, 2013** and join us as we are pleasantly surprised and entertained by their selection.

Doors open at 6:30 p.m. in Emmanuel's Dining Room with the show starting at 7:00 p.m. \$4.00 covers snacks and refreshments. Please RSVP to the Reif's at karl1@att.net or 314-961-3743.



We'd love to have you with us as we kick off another great season!



Emmanuel PDO Adding New Program Day

We are happy to announce that the Emmanuel Parent's Day Out (PDO) program for 2- to 3-year-olds is opening a new program day on Thursdays (9 a.m. to 12 p.m.) beginning in September. This is in addition to our current days of operation

If you, a friend or family member are interested in Emmanuel PDO, please contact **Angie MacBryde** at 961-2393 or emmanuelpreschool.wg@gmail.com.

New Photo Directory

The Emmanuel Photo Directory has been emailed to our parishioners.

We hope this helps our faith community to stay in touch. If you would like to provide a new or different photo, you may submit it in electronic format to the office.

This effort is a work in progress and regular updates will be created. **Thank you for your participation.**

Aubrey Atwater

Sunday October 13th 7:30 pm-9:30 pm

**Traditional American Folk Music & Dance
Solo Concert
Emmanuel Episcopal Church**



Old time music lovers,
lovers of dance, and Celtic folk tunes.
Don't miss the opportunity to
experience

Aubrey Atwater live at Emmanuel.

Food Center News

Please recycle your paper grocery bags to the Food Center. For a family of four, we need six paper bags to double bag the order.

We don't use plastic bags because we can't write the client's name on the plastic. Also, the bags fall over and often spill items before the clients come to pick up their orders.



Fellowship Dinners Continue

Mark your calendars;
the Fellowship Dinners
October 2, 9, 16, 23 and 30
5:30-7:00pm
\$3 per person, \$10 family max.

The fall series runs until November 13th. We will take a break for the holidays, starting up again on January 8th and go until February 26th. (And I am sure a spring session will follow!)

Charlie Walch's soup was such a hit last year that we also want to offer "Guest Chef" nights. So if anyone would like to share a favorite meal just let us know and we will gladly turn over the kitchen to you.

As always watch Facebook if you want to know the menu in advance! Audrey, Pam and I are looking forward to the dinners again.

Thanks,
MJ



Schnuck's Scrip
Jan-June \$378



Be sure to use your Schnuck's card when you shop. Our Mission Committee is the beneficiary. Need a card, call the office.

BISHOP'S VISIT

Sunday, October 13



Bishop George Wayne will preside over the sacraments of Baptism, Confirmation, Reaffirmation, and Holy Eucharist in his annual visit to our parish.

Confirmation, Reception, and Reaffirmation

"Confirmation is the rite in which we express a mature commitment to Christ, and receive strength from the Holy Spirit through prayer and the laying on of hands by a bishop." (Book of Common Prayer 1979, 860). Whereas full membership is conferred in the initiatory rite of Holy Baptism, Confirmation is a commissioning and empowerment for ministry. Those baptized at an early age are expected, after a period of instruction, to make a "mature public affirmation of their faith and commitment to the responsibilities of their Baptism and to receive the laying on of hands by the Bishop." (Book of Common Prayer 1979, 412).

Those who have been baptized in other denominations who have made a "mature public affirmation" will be "received" into the Episcopal Church through the laying on of hands by the Bishop. Those who have been "received" or "confirmed" in the Episcopal Church may "reaffirm" their baptismal covenant in the service of Confirmation.

Confirmation or Reception qualifies individuals to vote at the Annual Parish Meeting, to serve as members of the Vestry, and to serve in the Councils of the Church as laity.

Reaffirmation is a rite which allows one to re-affirm the promises made at baptism. Many people who have been away from the Church for a significant period, or who have experienced a particular renewal or strengthening of faith, or who were confirmed in their youth desire to re-affirm their baptism in a public way and are invited to participate in this rite.

Services of Confirmation, Reception, and Reaffirmation will occur during the Bishop's visit on October 13.

Following the 10:00 a.m. service the Metro III delegates and alternates will host a reception for the bishop.

You may contact the Clergy directly with any questions at 314-961-2393.

St. Francis Animal Blessing in the Memorial Garden

Sunday, October 6 at 5:30 p.m.

You are invited to bring your furry (or feathered or scaly) friends to receive a blessing, as long as they are appropriately restrained.

Weather permitting, we will hold the entire 5:30 service in the Memorial Garden.



Vestry Vibes – September 16, 2013

Karl Reif began the vestry meeting with a reflection that reminded us that it's important to keep a sense of humor by offering a few one liners focused on church or religious themes. To keep us humble about our position on the vestry, he noted that "Many folks want to serve God, but only as advisors." Keeping this good advice in mind, the vestry examined the treasurer's reports prepared by Diana Knapp, including statements of Income and Operating Funds (*we're doing well, but the year is not over*), the Behold Campaign (*a committee will make recommendations on how to wrap up the campaign*), the 2014 budget (*look at the year's past expenses*), and a Facilities Management Update (*discussion about what should be coded as Property Maintenance and what as Facilities Management*).

We reviewed the process for assembling the Nominating Committee for the next vestry election and heard a report on the stewardship campaign from Mark DeYoung. There were questions about how the Episcopal Church might aid those in the Boulder, CO area (*referred to Missions Committee*). Cynthia Rapp gave a Metro III update including information about the merger of Grace and St. Matthews, convention, a hotdog picnic at St. Paul's, and the potential merger with St. Stanislaus. Rector Appleyard provided additional information about the St. Stanislaus situation, a staffing update, and newcomer update. We closed with prayer, mindful of another of Karl's one liners: "When you get to your wit's end, you'll find God lives there."

If anyone would like to discuss these issues further, please feel free to speak to any member of the vestry.

Ann Marie Ruhlin

Environmental Stewardship Committee News

As you clean out the basement prior to the annual rummage sale, you may find some items that aren't suitable for a rummage sale, but shouldn't go in the trash. **What to do with old batteries, appliances or electronic devices?** Many contain toxic chemicals that shouldn't go into landfills. Webster Groves' single stream recycling does not accept plastic #6. **Here are some solutions:**

Used compact fluorescent light bulbs (CFLs) can be recycled at Home Depot or Lowe's.

Rolling Ridge Nursery in Webster Groves has recycling dumpsters for plant pots and trays, including plastic #6.

Electronic devices, household and business equipment ("anything with a cord") can be donated to WITS, a local non-profit group. Fixable equipment is refurbished and returned to the community for educational use. Unfixable items are recycled appropriately (they have a 0% landfill policy). They also provide job training programs. More information is available at www.witsinc.org. The next events in our area are:

- 10 am - 4 pm Sat Nov 16 – Sunset Hills City Hall parking lot, 3939 S. Lindbergh
- 10 am - 4 pm Sun Nov 3 – Affton, 5433 Telegraph Rd.
- 10 am - 4 pm Sat Sept 28 & Nov 23 – Chesterfield Athletic Complex, 17925 N. Outer 40 Road



CLERGY & STAFF

Dan Appleyard, *Rector (ext 212)*
 Martie Metzler, *Assistant Priest (ext 218)*
 Warren E. Crews, *Priest Associate*
 Roderic D. Wiltse, *Priest Associate*
 Trent Patterson, *Choir Director*
 Chuck Peery, *Organist*
 Kevin Williams, *Christian Youth Formation (ext 213)*
 Susan Baseley, *Parish Administrator (ext 249)*
 Susie Feldmann, *Staff Assistant (ext 209)*
 Bill Simokaitis, *Staff Accountant (ext 210)*
 Keith Ennis, *Sexton*
 Kelly Lakies & Dianna Kopopka, *Part-time Sextons*
 Glenn Dunn, *Information Technology (ext 240)*
 Angela MacBryde, *Preschool Director (ext 123)*

MINISTRY CHAIRS:

Mary Lee (Mimi) Shipp, *Senior Warden*
 Martha LaFata, *Junior Warden*
 Diana Knapp, *Treasurer*
 Mark Jordan, *Finance Committee*
 Tammy Free & Linda Schuchman, *Altar Guild*
 Jane Emerson & Mimi Shipp, *Archivists*
 Peg Cooper, *Caring Ministries*
 Lynne Shields & Megan Wren,
Environmental Stewardship
 David Pluhar & John Liss, *Facilities Management*
 Diana Beckman, Tricia Copeland
 & Angie MacBryde, *FaithQuest*
 Bill Cochran, *Men of Emmanuel*
 Donna Erickson, *Missions*
 Mart Mitchell, Mike & Maureen Walsh,
Parish Family Life
 Kathleen Martin, *Worship*

Staff Email Addresses

dappleyard@emmanuelepiscopal.org
 mmetzler@emmanuelepiscopal.org
 parishadmin@emmanuelepiscopal.org
 kwilliams@emmanuelepiscopal.org
 sfeldmann@emmanuelepiscopal.org
 atreas@emmanuelepiscopal.org
 gdunn@emmanuelepiscopal.org
 cpeery@emmanuelepiscopal.org
 tpatterson@emmanuelepiscopal.org

Church number is 314-961-2393

In the case of a pastoral emergency after office hours, please call the clergy cell phone at 314-324-4115.

**Emmanuel**

Every year for the past ten years, the **Caring Ministries Committee** has sponsored a Blood Drive. This year, our drive will be held on **Saturday, Oct. 26, 2013 from 8:00 AM-12:00 noon** in the church dining room.

It will be run by the Mississippi Valley Blood Center. Child care will be provided. Volunteers are also needed to help that day, and homemade cookies are needed.

Starting on Sunday, October 6th, there will be a sign-up table in the dining room during Adult Forum. Sign-up sheets for donors, volunteers, and cookie bakers will also be on the bulletin board outside the Food Center during the weeks prior to the drive.

Invite your friends to become blood donors. Any questions, call **Katherine Ziegler** at 961-3327, **Pat Wiltse** at 542-3655, or **Peg Cooper** at 821-1012.

WALK-IN DONORS WILL ALSO BE WELCOME.

This is a very important part of our ministry to our community, and it is one of the ways that you can contribute at no financial cost to yourself.

October is Domestic Violence Awareness Month.

As part of our mission to **Lydia's House**, a home for women and children who have experienced domestic violence, we will collect disposable diapers (especially larger sizes), feminine products, and items such as liquid laundry detergent, toilet paper, and paper towels until Sunday, Oct. 27.

Please place your contributions in the box designated for Lydia's House in the Dining Room. If you have questions, please call **Laura McCord** at 963-0481.

Our Rummage Sale is 4 Days away!!!

Saturday October 5 from 8am to Noon

All Proceeds benefit our Mission Trips for Adults and Youth
This is an important fund-raiser for ALL of our Mission Trips



Emmanuel Annual Rummage Sale

We start accepting donations this Friday, October 4 at 3pm in Emmanuel's Dining Room

We would really appreciate it if you could presort the items into these categories:

- Men's clothing and shoes
- Women's Clothing and shoes
- Kid's clothing and shoes
- Infant's clothing and toys
- Housewares
- Home – Furniture, Rugs, Lamps, etc.
- Toys – Games, sporting goods
- Lawn, garden and Patio
- Books/DVD's/CD's
- Electronics
- Antiques/Collectibles
- Costumes/Vintage Clothing
- Jewelry
- Luggage
- Crafts
- Automotives
- **CLEAN & GENTLY USED**

We DO NOT accept mattresses, Electronics*, swimwear or underwear.

*Electronics meaning TV's, computers, DVD players, cameras, keyboards, etc.

Kitchen/Personal/Household appliances accepted if in good working order

We also have plenty of opportunities for Volunteers – just give us a call!

Questions or Volunteering - please contact

Pam Belloli at 314-706-1016 or pambelloli@earthlink.net or

Phyllis Newcomb 314-961-6740 or brettbewcomb@sbcglobal.net

BIRTHDAYS

ANNIVERSARIES

October 1
 Audrey Claxton
 Creighton
 DeYoung
 Kay Faddis
 Lissa Johnson
 Carolyn Judd
 Glenda Mansker
 John McCarthy
 Scott Moore
 Jack Witte

October 2
 Peggy Ledbetter
 Sue Smith
 Haley Woolbright

October 3
 Adam Erickson
 Tim Knox
 Elliott Moore
 Mary-Margaret
 Richardson
 Kim Tappana

October 4
 Maryellen Bell
 Sandy Cooper
 Stephen Knapp
 Mary Leisher
 Cindy Murray
 Stephanie Wiltse

October 6
 Rita Hudson
 Jennie Whitt

October 7
 Burnell Esbenshade
 CJ Fischer
 Ava Fitzgibbon

October 8
 Annelisse Schiller

October 9
 Bill Hudson
 Gabriel Liss
 Alex Mitchell

October 10
 Charles Burns
 Ted Miller

October 11
 Jodie Allen
 Donna Erickson
 Debbie Mason
 Karen Young

October 12
 Scott Fitzgibbon
 Don Judd
 Ashley Maschmann

October 13
 Megan Huey
 Carl Rapp
 Angela Smith

October 14
 Emma Smith

October 15
 Julian Appleyard
 Paula Collins
 Anne Lindner
 Drew Perry

October 3
 Alex & Nicole
 Clark

October 4
 Bran & Annie
 Pluhar
 Joe & Pat Sanders

October 6
 Gary & Kim
 Tappana

October 7
 Chris & Katie
 Gregston

October 8
 Dave & Barb Buck
 Mark & Laurie
 Collier

October 9
 Jonathan &
 Stephanie Wiltse

October 10
 Bill & Victoria
 Hudson

October 12
 Joel & Tracy Crews
 John & Mary Ellen
 McCarthy

October 13
 Matt & Julie Burst
 Chris &
 Marissa Temple

October 15
 CJ & Greta Fischer

October 17
 Jonathan & Heidi
 Hastings

October 18
 Kat Singleton &
 Larry Schmidt

ACOLYTE SCHEDULE

October 6
 Team Captain – Charlie
 DeYoung
 1st. Crucifer – Jack Love
 Acolytes: Maia Langdon,
 Clio Langdon Elijah
 Myers, Claire Hooker,
 Chloe Hooker

October 13
 Team Captain – Isabella
 Crang
 1st. Crucifer – Julianna
 Crang
 Acolytes: Jameson
 Howard, Kendra
 Howard, Tom Florent,
 Hannah Myers, Lily
 Partridge

October 20
 Team Captain – Clay
 Moss
 1st. Crucifer – Ella Moss
 Acolytes: Thomas
 Hotaling, Claire Hooker,
 Isabelle Appleyard,
 Emma Sabath, Ashley
 Maschmann

October 27
 Team Captain – Hannah
 Myers
 1st. Crucifer – Charlie
 DeYoung
 Acolytes: Matt Walch,
 Elijah Myers, Rachel
 Fisher, Annie Buck,
 Sawyer Buck

BAPTISMAL DATES FOR 2013



Below are the scheduled dates for Baptism and Baptismal Preparation Session. At least one parent must attend a preparation session before a child may be baptized at Emmanuel. You need not have set a baptismal date to come to one of these sessions.

If you are pregnant or still deciding about baptizing your child here, please come. This is a wonderful opportunity to learn more about baptism.

Call Susie in the church office at 961-2393 to make a reservation. A light supper is served.

Baptism Dates

Nov. 3 at 10:30 a.m.
 Nov. 10 at 9:00 a.m.

Preparation Class

Nov. 5 at 6:00 p.m.
 Jan. 7 at 6:00 p.m.

THE PRAYERS OF THE PARISH ARE REQUESTED FOR:

PLEASE keep the office updated on the progress of those you have placed on this list so our list remains timely.

ARMED FORCES

Parishioners: Ethan Allman, Aaron Faust, Nathaniel Baker, Adam Erickson

Brian Maginn, Christie Maginn's son
David Benning, Dorothy Saunders' nephew
Jason Martens, Jen Dunn's brother
Stephen Carson, Nan Rimbach's nephew
Ron Asher, Sara Loyet's nephew
Frank Randazzo, friend of the Kuhns

IN HOSPITAL/MED TESTS or TREATMENT

Parishioners: Linda James, Joyce Devlin, Jen Dunn, Elijah Myers, Tom James, Mary Tobermann, Katie Lawless

Carl Smith, Sue's husband
Jessica Ennis, Keith's daughter
Allison Reed, Cindy's daughter
Aaron Crowell, friend of Angie MacBryde
Linda Murer, Nancy McClary's cousin
Maisie Jane and her family, niece of Emily Spragens
Donna Maginn, friend of Dee Margos
Fritz Luckner, Anne Crown's father
Anna, friend of Betsy Lindner
Kenny Borino, Janet Dobbs' brother
Jodie Johnson, Lissa Johnson's mother
Scarlett Dorman, friend of the Kuhn's
Rev. Robert & Pat Klein, friends of Groetsch's
Vicki Conerly, friend of Maryjane Hotaling
Connor James Smith, Janet Fulford's great-greatson
McKenna, Riley, MJ Kuhn's cousin
Karol English Trudy Appel's daughter
Fran Gebhart, Doris Ferguson's daughter

LONG TERM MEDICAL NEEDS

Parishioners: Caroline Birdsall, Sandra Nelson, Don Rose, Roberta Gehbauer, Fran Martin, Laura Ullman, Grace Koerner, Nan Rimbach, Mary Ellen McCarthy, Sophie Owen

Rissa Woodley, Ann McReynolds' aunt
Margaret Clark, Dick's aunt
Ben Schneider, MacBryde's grandson
Ann Neukomm, Mart Mitchell's aunt
Coline Martines, Michael's mother
Annie Mae Fielder, Roberta's mother
Gabrielle Nelson, Sandy Nelson's granddaughter
Wylma Teczar, Steve's mother

RECUPERATING

**Parishioners: Joan Amerman, Rosemary Vorih, Charlotte Kennedy, Burnell Esbenshade, John Meyer
Laura Williams, Betsy's mother**

Steve Wilson, Lynne Shields' friend
George Benson, Hilary Perkins step-father
Erwin & Adeline Branahl, Sandy Cooper's parents

SERIOUS ILLNESS

Parishioners: Mary Dolores Baca

Cathy Ammons, Allison Williams's friend
Bobbie Krehbiel, Ann McReynolds' friend
Denny Douglass, Beth Dodd's cousin
Dickie Priest, Betsy Mackey's friend
Rachael, Bill & Victoria Hudson's niece
Alvin Stouffe, Bill Florent's brother-in-law
Mike Karandief, Chris Knox's family friend
Paula Coulton, Don & Stella Spalts's friend
Lois Johnson, family friend of Lisanne Schraer
Ed Heigl, friend of Ann McReynolds
Bob Powers, friend of Hotalings and Bucks
Sharon Geraghty, friend of Lisanne Schraer
Carole Smith, friend of Nancy McClary
Stephanie Duensing, Lissa Johnson's sister
Heather McFadden, Margaret DeYoung's friend
Marty Schmitt, Margaret DeYoung's friend
Barbara Hulett, Maryellen Bell's friend
Cathy Sheldon, Katie McGuigan's daughter
Janet Klumpp, Rod & Pat Wiltse's friend
Linda Ott, Sandy Baker's friend
John Kohler, Sue & Lou Clauss' friend
Tammy Stutz & family, Tracy Crews' friend
Frances Brown, Becki Jacoby's mother
JoAnne Bryant, Becki Jacoby's aunt
Paula/Jim Spangler, John Mitchell's sister/brother-in-law
Shirley Beckman, Diana Beckman's mother
Tim Daugherty, Debby Long's son
Debra Dean-Ciriani, Lisa Teczar's friend
Greg Ling, Glenn Dunn's brother-in-law
Jean Pettid, Lisa (Sparks) Pettid's mother-in-law
Jessica Butler, Molly Clark's friend
Patricia McGregor, Stella Spalt's cousin
The Rev. Doug Nissing



SPECIAL NEEDS

Parishioners: Jean Weingaertner, Warren Druschky
Ieshia Charging Hawk, friend of adult mission trip group
JoAnne Hansen, Eleanor Fletcher's sister-in-law
Peggy Thacker McCaslin, Kerry Thacker's daughter
Kathleen McGrane, McGrane's daughter
Mark A. Baxley, Ruth's son
Sue Kohler, Sue & Lou Clauss' friend
Jeffrey, Sue Smith's grandson
Doug Moody, Mary Jane Kuhn's Godson
Madeline, Adam Kopff's aunt
Susan Fletcher, RN, friend of Ann McReynolds
Andrew Jones, Steve & Lisa Teczar's nephew

CALENDAR OF UPCOMING EVENTSFor a complete listing of events, please consult our online calendar at www.emmanuelepiscopal.org**FALL SCHEDULE**

Sunday Holy Eucharist: 8:00, 9:00, 10:30 a.m. & 5:30 p.m.

In-Gathering—Awareness of Domestic Violence Month—Lydia's House
October 1 - 20

Blood Pressure Screening
Sunday, Oct. 6 & Nov. 3 following the 10:30 a.m. Service

Inquirer's Class
Sunday, Oct. 6 at 11:30 a.m.

Sr. High Car Wash
Sunday, Oct. 6 at 7:30 a.m.

St. Francis Animal Blessing in the Memorial Garden
Sunday, Oct. 6 at 5:30 p.m.

Bishop's Visit and Reception
Sunday, Oct. 13

Aubrey Atwater - Traditional American Folk Music
Sunday, Oct. 13 at 7:30 p.m.

WOE Movie - Girl Rising
Sunday, Oct. 20 at 2:00 p.m.

Memorial Garden Celebration
Sunday, Oct. 27

Environmental Stewardship Committee Meeting
Sunday, Nov. 17 at 11:30 a.m.

Missions Committee Meeting
Sunday, Nov. 17 at 11:45 a.m.

Women's Book Club
Monday, Oct. 28 at 7:00 p.m.

Stewardship Committee Meets
Monday, Oct. 7 at 6:00 p.m.

Finance Committee Meets
Monday, October 7 at 6:30 p.m.

Jr. High Leader Meeting
Monday, October 7 at 6:30 p.m.

Executive Committee Meets
Monday, Oct 14 at 5:30 p.m.

Caring Ministry Meeting
Monday, Oct. 14 at 7:30 p.m.

Vestry Meeting
Monday, Oct 21 at 7:00 p.m.

Worship Committee
Monday, Nov. 4 at 6:30 p.m.

Bible Study with Rod
Tuesday, Oct. 1, 8, 15, 22 and 29 at 9:30 a.m.

Contemplative Prayer in the Chapel
Tuesday, Oct. 8, 22 at 5:30 p.m.

Eucharist at Noon
Wednesday, Oct. 2, 9, 16, 23, 30

Fellowship Dinner
Wednesday, Oct. 2, 9, 16, 23, 30

Webster Works Day
Wednesday, Oct. 2 at 9:00 a.m.

Food Center Shopping at Aldi's
Wednesday, Oct. 9 at 5:45 p.m.

Emmanuel at Laclede
Wednesday, Nov. 20 at 2:00 p.m.

Men's Bible Study at Stratton's Restaurant
Thursday, Oct. 3, 10, 17, 24, 31 at 7:00 a.m.

AIR Committee
Thursday, Oct. 3 at 6:00 p.m.

MOE Operation Brown Bag
Thursday, Oct. 24 & Nov. 21 at 4:45 p.m.

Sr. High Group Leaders Meeting
Thursday, Oct. 3 at 7:00 p.m.

Prayer Shawl Ministry
Thursday, Oct. 3 and 17 at 7:00 p.m.

Noon Day Operation Brown Bag
Thursday, Oct. 10 and Nov. 14 at noon

Play Readers
Friday, Oct. 25 at 6:30 p.m.

CPR/ AED Training
Saturday, Sep. 21 at 9:00 a.m.

Facilities Management Committee Meeting
Saturday, Oct. 26 at 8:30 a.m.

Sunday Service Times:

8:00 a.m.

9:00 a.m.

10:30 a.m.

5:30 p.m.



Emmanuel Episcopal Church

9 South Bompert Avenue
Webster Groves, MO 63119

Address Service Requested

Nonprofit Organization
U.S. Postage
PAID
St. Louis, Missouri
Permit No. 8

The next newsletter deadline is **October 8** for the issue to be published on October 15. All articles and information should be submitted to Sue Baseley (parishadmin@emmanuelepiscopal.org) in the parish office (by email, if possible). Thank You.

Sunday Worship Schedule and Propers

Child care is available in the nursery (near the Big Bend entrance) from 8:45 a.m. until after the 10:30 a.m. service.

Fall Service Schedule: 8:00, 9:00, 10:30 a.m. and 5:30 p.m.

Propers for October 6

Lamentations 1:1-6
Or Habakkuk 1:1-4; 2:1-4
Lamentation 3:19-26 *or* Psalm 137
Or Psalm 37:1-10
2 Timothy 1:1-14
Luke 17:5-10

Propers for October 20

Jeremiah 31:27-34
Or Genesis 32:22-31
Psalm 119:97-104 *or* Psalm 121
2 Timothy 6 3:14 - 4:5
Luke 18:1-8

Propers for October 13

Jeremiah 29:1, 4-7
Or 2 Kings 5:1-3, 7-15c
Psalm 66:1-11 *or* Psalm 111
2 Timothy 2:8-15
Luke 17:11-19

Propers for October 27

Joel 2:23-32
Or Sirach 35:12-17
Or Jeremiah 14:7-10, 19-22
Psalm 65 *or* Psalm 84:1-6
2 Timothy 4:6-8, 16-18
Luke 18:9-14

